

**The National Statistical Committee
of the Kyrgyz Republic**

**FOOD SECURITY AND POVERTY
INFORMATION BULLETIN OF THE
KYRGYZ REPUBLIC**

3 / 2011

Bishkek city 2011

**The National Statistical Committee
of the Kyrgyz Republic**

**FOOD SECURITY AND POVERTY
INFORMATION BULLETIN OF THE
KYRGYZ REPUBLIC**

3 / 2011

Bishkek city 2011

Food security and poverty information bulletin of the Kyrgyz Republic

Editorial board:

- Chairman - O. Abdykalykov
Members: - D. Baijumanov
- N. Tulegabylov
- A. Osmonaliev
- A. Satybaldiev
- K. Koichumanova
- R. Plesovskih
- C. Turdubaeva

For information regarding this publication please contact:

374, Frunze street, Bishkek city;
phone: 996 (312) 324655, 325557;
fax: 66-01-38; web-site: www.stat.kg;
e-mail: nsc_mail@stat.kg;
The National Statistical Committee of the Kyrgyz Republic;
Sampling Survey Department.

Food security and poverty information bulletin of the Kyrgyz Republic contains the analysis of the situation on food provision in the country for 9 months of 2011. The bulletin combines and systematizes materials on food availability, its production, indicators of access to food, data on its consumption per capita.

Annexes of the bulletin contain review of hydro-meteorological conditions on the territory of the Kyrgyz Republic in the IIIrd quarter of 2011, information on average retail prices for food for the IIIrd quarter of 2011, estimates on food balance for 9 months of 2011 by basic foodstuff, nutrition balance in kind of energy value by results of integrated survey of 5016 households for the Ist quarter of 2010-2011, as well as indicators of Millennium Development Goals (MDG) and food security.

The publication is quarterly.

Copies: 120 in Russian and 35 in English;

The publication is also available in electronic format.

While using statistical data in mass media and scientific papers, disseminating these data through information nets, hard copies, CD discs and other, users have to refer to their source (article 17 of the Law on State Statistics).

Conventional signs:

- Event is not existing;
- ... Data are not available;
- 0,0 Negligible and insignificant value.

In separate cases insignificant discrepancies between total and sum of components are explained by rounding.

Contents

Overview	4
Introduction	5
Section I. Socio-Economic Indicators	6
1.1. Gross Domestic Product	6
1.2. Prices and Tariff Indices	7
1.3. Labour Market	9
Section II. Availability of Food	10
2.1. Agriculture	10
2.1.1. Crop Production	10
2.1.2. Livestock Production	12
2.1.3. Producer Price Index of Agricultural Production	14
2.1.4. Trade of Basic Foodstuffs	15
2.1.5. Availability of Food Per Capita	15
Section III. Access to Food	16
3.1. Consumer Prices Analysis	16
3.2. Money Income of Population	17
Section IV. Additional materials	20
Poverty level in the Kyrgyz Republic in 2010	20
List of Abbreviations	23
Methodological explanations	24
Annex:	
1. Review of Hydro-meteorological Conditions on the territory of the Kyrgyz Republic in the 3 rd quarter of 2011	25
2. Average Consumer Prices for Food (by regions, 3 rd quarter of 2010-2011)	26
3. Food Balance	29
4. Food Balance expressed in nutritional values and compared to calculated daily needs based on surveys of daily intake and on calculated daily needs based on recurrent nutritional surveillance by Socio-Demographic Groups of Population and Regions (1 st quarter of 2010-2011)	31
5. Food Balance expressed in nutritional values and compared to calculated daily needs, based on surveys of daily intake and on calculated daily needs based on recurrent nutritional surveillance by Quintile Groups and Regions (1 st quarter of 2010-2011)	39
6. Household Food Balance expressed in value terms based on results of surveys of living standard by Income Quintile Groups and Regions (1 st quarter of 2010-2011)	44
7. Household Food Balance expressed in value terms based on results of surveys of living standard by Expenditure Quintile Groups and Regions (1 st quarter of 2010-2011)	50
8. Millennium Development Goals (MDG) indicators	56
11. Food Security Indicators of the Kyrgyz Republic	59

OVERVIEW

Gross domestic product (GDP) calculated by production method, in January-September 2011, according to preliminary estimation, has been valued at 189259,5 million KG Soms and has increased by 8,7% in comparison with January-September 2010.

page 6

In September 2011, Consumer Price Index (CPI) characterizing inflation rate, in comparison with the previous month has made up 98,9%, and in comparison with December of the previous year - 104,4%.

page 7

In January-September 2011, gross output of agriculture, hunting and forestry products was valued at 109838,9 million KG Soms and the physical volume index has made up 102,5%.

page 10

As of the end of September of 2011, 574,3 thsd. hectares of grain and leguminous crops have cut, or 91,9% of harvesting area.

page 11

In January-September 2011, producer prices for sold agricultural products have increased in 1,5 times in comparison with the corresponding period of the previous year.

page 13

Introduction

Pursuant the Rome Declaration, adopted on November 17, 1996 during the World Food Summit, the Kyrgyz Republic as a member of the international community assumed responsibility to "...conduct a policy aimed to the alleviation of poverty and inequality, provision of physical and economical access to all people and at all times to sufficiently dietary adequate food and as well as to its use".

In 1999, the Government of the Kyrgyz Republic, in cooperation with the European Commission in the Kyrgyz Republic has developed and adopted a National Food Security Policy. The policy (and EC funding under the EC-Food Security Programme) sustains reforms in food security related to such sectors as agriculture and social protection.

Food security is a physical availability of a foodstuff in the required quantity, possibility of access to indicated foodstuff (the products made in households, and acquired through the market, gifts and other sources) and consumption of foodstuff in that quantity which are necessary for maintenance of food needs.

Food and nutrition security presumes the availability of adequate food (in the context of quantity, quality, safety and social and cultural acceptability), provision of access and adequate consumption and digestion of such products by all persons at any time for an active and healthy life.

Food Availability: physical existence of quantitatively and qualitatively adequate and safety food items at any moment of time.

Access: all households and household members have sufficient resources to obtain appropriate food (through production, purchase or donation).

Stability: continuous provision of availability, access and use of food. If there is no stability, individuals will suffer from chronic or transitory food insecurity

The aim of the KR Food Security and Poverty Information Bulletin is to provide up-to-date and reliable information and analysis of the current food security situation in the country.

The publication of information bulletin was prepared by the National Statistical Committee of the Kyrgyz Republic. The publication contains information provided by State Agency on Hydro Meteorology of the Ministry of Emergency of the Kyrgyz Republic. The bulletin was financed by the European Commission in the Kyrgyz Republic and technical support was provided by UN FAO.

Section I. Socio-Economic Indicators

The below socio-economic indicators characterizes the general situation of economy in the country for the analysis of food security situation.

1.1. Gross Domestic Product

Gross domestic product (GDP) calculated by *production method*, in January-September 2011, according to preliminary estimation, has been valued at 189259,5 million KG Soms and has increased by 8,7% in comparison with January-September 2010. Real growth rate of GDP excluding «Kumtor» mining company made up 6,8%. The volume of GDP calculated per capita made up 36,1 thsd. soms and in comparison with the corresponding period of the previous year has increased by 7,5%.

Table 1: Main socio-economic indicators

	2010	January-September	
		2010	2011
Average annual number of present population, mln. people	5,19	5,19	5,25
Nominal GDP, mln.soms	212177,4	146872,3	189259,5
in % to GDP:			
agriculture	18,5	19,9	19,7
industry and construction	25,1	23,1	25,5
services	45,9	46,3	43,3
GDP per capita, thsd. soms	40,9	28,3	36,1
GDP growth rate, %	98,6	98,8	108,7
CPI ¹	108,0	104,9	120,0
CPI for foodstuff and nonalcoholic beverages (soft drinks) ¹	106,5	101,2	131,9
CPI for services ¹	107,2	105,8	111,5
Number of employed population thsd. people ⁵	2243,7	-	-
Average monthly wage and salary, soms	7189	6754 ²	8491 ²
Import, mln. US dollars ³	3222,8	2163,5	2934,1
Export, mln. US dollars ³	1755,9	1041,3	1436,7
Exchange rate of KG som to ⁴ :			
US dollars	45,96	45,68	46,18
Euro	61,06	60,16	65,06
RUR	1,51	1,51	1,61
KZT	0,31	0,31	0,32
Subsistence level, soms	3502,65	3433,93	4296,81

¹ In % to the corresponding period of the previous year.

² Excluding small enterprises, January-august.

³ Including volumes of external trade implemented by individuals.

⁴ According to data of the National Bank of the Kyrgyz Republic.

⁵ Annual data.

1.2. Prices and Tariff Indices

In September 2011, *Consumer Price Index (CPI)* characterizing inflation rate, in comparison with the previous month has made up 98,9%, and in comparison with December of the previous year - 104,4%. In September 2011, prices for cereals have decreased by 0,5%, bread – by 0,8%, rice - by 1,3%, mutton - by 1,5%, flour - by 7,0%, fruits and vegetables – by 11,2%, sugar - by 12,4% in comparison with the previous month.

In September 2011, prices for *foodstuff and nonalcoholic beverages (soft drinks)* have decreased, in general, by 3%.

In September 2011, at the same time, prices for bakery products (by 2,6%), beef (by 3,4%), eggs (by 7,5%), poured milk (by 12,3%) have increased.

Table 2: Price index for main types of food products
(as a % to the previous month)

	Wheat flour		Bread	Ashcake	Beef	Mutton	Milk (poured)	Eggs	Sunflower oil
	High quality	First grade							
January	102,2	101,9	100,7	101,1	105,7	109,4	105,6	106,6	100,6
February	104,7	106,2	103,1	102,7	103,5	105,4	108,9	95,9	100,0
March	107,8	111,1	105,7	102,2	100,4	101,9	92,5	94,2	101,3
I st quarter ¹	115,4	120,2	109,7	106,1	109,8	117,6	106,3	96,3	101,9
April	101,4	100,4	100,7	100,1	99,3	99,8	95,5	100,3	100,8
May	99,3	98,1	98,2	100,0	101,8	102,7	89,8	97,1	100,8
June	99,1	98,0	100,0	99,9	104,2	105,0	93,5	97,6	98,2
II nd quarter ¹	99,8	96,5	98,9	100,0	105,4	107,7	80,2	94,9	99,9
July	99,7	98,8	99,9	99,9	105,2	103,6	92,1	97,2	100,6
August	98,6	97,8	99,9	99,9	102,4	100,3	100,9	100,9	100,3
September	93,4	92,8	99,3	99,3	103,4	98,5	112,3	107,5	99,6
III rd quarter ¹	91,9	89,7	99,1	99,1	111,3	102,4	104,3	105,4	100,5

¹Cumulative total for three months of the quarter.

In September 2011, prices for fresh fruits (by 11,4%) and fresh vegetables (by 7,7%) have decreased in comparison with the previous month.

Table 3: Price index for selected types of fruits and vegetables
(as a % to the previous month)

	Carrot	Onion	Cabbage	Beet	Cucumber	Tomato	Apples	Potatoes
January	130,6	124,3	177,5	135,7	149,9	109,1	109,6	138,0
February	100,1	115,0	128,7	118,4	96,6	90,8	104,0	101,0
March	101,0	93,6	110,0	108,1	102,5	138,8	105,1	92,8
I st quarter ¹	132,0	133,7	B 2,5 p.	173,5	148,3	137,4	119,7	129,3
April	106,0	98,7	110,4	130,8	78,5	91,9	111,2	89,7
May	101,5	126,5	70,9	116,9	46,2	73,5	121,7	93,8
June	118,7	87,1	50,4	93,8	33,0	63,1	111,4	143,9
II nd quarter ¹	127,7	108,8	39,4	143,4	12,0	42,6	150,8	121,1
July	85,6	83,9	57,9	47,4	124,0	72,0	75,3	86,5
August	66,8	79,3	85,0	81,9	101,6	49,0	75,3	78,3
September	92,2	89,6	121,3	112,4	121,3	87,4	77,7	76,8
III rd quarter ¹	52,7	59,6	59,7	43,7	152,8	30,8	44,0	52,0

¹Cumulative total for three months of the quarter.

Foodstuff and nonalcoholic beverages (soft drinks) have increased by 3,7%, despite the decrease of prices for them in general, by 7,3% in the IIIrd quarter of 2011, in comparison with December 2010. Of which, cereals have increased in 1,8 times, fresh meat – by 27,3%, pasta – by 16,7%, sugar – by 11,2%, bread – by 7,0%, flour – by 4,4%. In January-September 2011, prices for fruits and vegetables have decreased by 29,3%. Since the beginning of 2011, prices for alcoholic beverages and tobacco have increased, in general, by 6%.

Table 4: Price index for selected groups of food products

(as a %)

	September 2011			January-September 2011 to January-September 2010
	to September 2010	to December 2010	to August 2011	
Bakery products and grains	114,6	106,6	95,8	136,1
Meat	138,1	124,0	101,9	136,1
Fish	109,3	104,9	100,4	111,9
Milk products, cheese and eggs	111,7	97,6	104,5	113,9
including eggs	101,2	96,3	107,5	112,7
Oils and fats	119,2	105,4	100,0	135,3
Fruits	119,3	76,7	90,4	131,9
Vegetables	99,4	68,5	88,2	143,1
Sugar, jam, honey, chocolate and sweets	118,8	111,4	92,4	121,4
Nonalcoholic beverages (soft drinks)	117,2	110,7	100,5	116,4
Alcoholic beverages	107,8	105,5	100,9	106,7

In September 2011, in comparison with the previous month, average prices for main consumer goods have decreased, excluding beef which price has increased on the average by 10,5 Soms.

Table 5: Average prices for selected representative goods

(som per kilo)

	Wheat flour		Bread	Ashcake	Mutton	Beef	Potato
	High quality	First grade					
January	34,02	28,30	35,36	42,30	248,18	251,59	26,41
February	35,54	30,03	36,44	43,39	262,00	260,68	27,33
March	38,25	33,34	38,52	44,30	267,29	261,85	25,63
April	38,80	33,51	38,78	43,84	266,62	259,80	22,70
May	38,54	32,89	38,08	43,84	273,42	264,39	20,58
June	38,23	32,29	38,07	43,62	287,21	274,97	28,96
July	38,11	31,91	38,03	43,60	298,04	289,56	26,22
August	37,61	31,23	38,00	43,57	298,97	296,62	20,59
September	35,25	28,98	37,69	43,25	294,31	307,09	15,17

More detailed information on dynamics of prices for food products is provided in Section III «Access to food».

According to the preliminary data for January-September 2011, import of foodstuff has made up 12,9% of total volume of import.

Table 6: Import and export of foodstuff¹

	January-September			
	2010		2011 ²	
	mln. dollars	as a percent to total volume	mln. dollars	as a percent to total volume
Import	269,0	12,4	380,0	12,9
Export	97,5	9,4	130,5	9,1

¹ Including volumes of external trade implemented by individuals.

² Data are preliminary.

1.3. Labour Market

As of October 1, 2011, according to the data of the Ministry of Labor, Employment and Migration of the Kyrgyz Republic, the number of unemployed population registered in state employment services who search for work, in comparison with the same date of 2010, has decreased by 2,1% and the number of unemployed - by 4,6%. The registered unemployment rate has made up 2,5% of the economically active population.

Table 7: The number of unemployed population registered in state employment services, as of October 1, 2011

	Total thsd. people	of which unemployed		
		thsd. people	as a percent to the corresponding date of the previous year	as a percent to the corresponding date of the previous month
Kyrgyz Republic	98399	62498	95,4	98,4
Batken oblast	8169	5443	95,6	101,7
Djalal-Abad oblast	21402	12 230	85,8	100,0
Issyk-Kul oblast	5279	4 469	97,7	100,5
Naryn oblast	11136	6556	96,2	98,9
Osh oblast	15066	12 985	92,4	94,5
Talas oblast	3727	2281	108,0	95,4
Chui oblast	8289	6 135	97,4	98,8
Bishkek city	13264	10 031	102,3	98,9
Osh city	7051	2368	123,7	99,8

Section II. Availability of Food

Availability of food – is a physical availability of safety and sufficient, quantitative and qualitative food at any time.

2.1. Agriculture

In January-September 2011, gross output of agriculture, hunting and forestry products was valued at 109838,9 million KG Soms and the physical volume index has made up 102,5%.

Table 8: Output of agricultural products

	As a percent to			
	the corresponding period of the previous year		the previous month	
	2010	2011	2010	2011
January	101,8	100,8	-	-
February	102,0	100,4	106,3	105,9
March	102,6	100,5	106,9	107,1
January-March	102,1	100,5	-	-
April	102,7	100,6	107,3	107,4
May	101,5	100,4	140,8	142,3
June	100,1	102,2	122,0	124,5
January-June	100,1	100,9	-	-
July	97,4	104,2	240,6	252,5
August	97,0	101,9	99,4	100,2
September	97,8	105,3	139,5	147,8
January-September	98,3	102,5	-	-

The share of state and collective farms in the structure of gross output of agriculture, hunting and forestry products has made up 2,3% of total production volume. The main part of products are produced by peasant farms (56,7%) and by private subsidiary plots of citizens (39,2%).

From total production the share of livestock has made up 44,3%, crop production - 53,8%, services – 1,7%, hunting and forestry – 0,2%.

Table 9: Gross output of agriculture, hunting and forestry products on the territory in January-September 2011

	Mln. soms (in current prices)	As a percent to	
		the previous year	total
Kyrgyz Republic	109838,9	102,5	100,0
Batken oblast	10731,8	99,4	9,8
Djalal-Abad oblast	21137,6	103,2	19,2
Issyk-Kul oblast	12135,3	106,4	11,0
Naryn oblast	6435,0	108,8	5,9
Osh oblast	20339,6	101,8	18,5
Talas oblast	8136,3	93,2	7,4
Chui oblast	29316,5	103,3	26,7
Bishkek city	939,6	98,4	0,9
Osh city	667,2	103,0	0,6

2.1.1. Crop production

In the country, the harvest of agricultural crops is proceeding.

As of the end of September of 2011, 574,3 thsd. hectares of grain and leguminous crops have cut, or 91,9% of harvesting area.

Table 10: Harvest of agricultural crops as of September 23, 2011

	Actual		To the corresponding date of the previous year	
	2010	2011	+, -	as a %
Grains and leguminous harvested (including maize), thsd. hectares	539,9	574,3	34,4	106,4
Grains threshed - total (in primary received weight), thsd. tones	1386,1	1471,0	84,9	106,1
from 1 hectare, centner	25,7	25,6	-0,1	99,6
wheat threshed (in primary received weight), thsd. tones	827,6	847,9	20,3	102,4
Tobacco collected (in physical weight), thsd. tones	8,7	8,9	0,2	102,4
Raw cotton collected (in physical weight), thsd. tones	21,5	46,0	24,5	в 2,1 p.
Oil crops threshed, thsd. tones	55,8	54,3	-1,5	97,3
Potatoes dug out, thsd. hectares	49,7	51,4	1,7	103,4
Potatoes dug out, thsd. tones	781,3	798,7	17,4	102,2
from 1 hectare, centner	157,1	155,4	-1,7	98,9
Vegetables collected, thsd. tones	648,1	639,5	-8,6	98,7
Melons collected, thsd. tones	155,3	147,9	-7,4	95,3
Fruits and berries collected, thsd. tones	146,0	161,0	15,0	110,3

The average yield of grain crops in the country has amounted to 25,6 centner per hectare (in primary received weight), versus 25,7 centner per hectare to the corresponding date of the previous year.

Table 11: Production of grain by territory as of September 23, 2011

(in primary received weight)

	Gross yield, thsd tones	As a % to the corresponding date of the previous year
Kyrgyz Republic	1471,0	106,1
Batken oblast	78,4	81,0
Djalal-Abad oblast	182,0	85,7
Issyk-Kul oblast	177,3	112,7
Naryn oblast	54,3	in 3,3 times
Osh oblast	239,4	98,2
Talas oblast	109,9	96,9
Chui oblast	625,4	115,5
Bishkek city	0,002	in 2,0 times
Osh city	4,3	97,6

In autumn 2011, 248 hectares were fall-plough, or 16,1% to the corresponding date of the previous year. Winter crops, totally by country, were sown more by 1,4 thsd. hectares (or by 19%) than in the previous year.

Table 12: Winter crops sowing, by territory, as of September 23, 2011

	Sown for harvest in 2012, total, hectares	As a % to the corresponding date of the previous year
Kyrgyz Republic	9041	119,0
Batken oblast	195	104,3
Djalal-Abad oblast	132	in 2,5 times
Issyk-Kul oblast	2757	-
Osh oblast	95	-
Talas oblast	921	61,0
Chui oblast	4941	84,5

Preparation of seeds for autumn sowing is proceeding.

Table 13: Needs and availability of grain crops seeds intended for autumn sowing¹

(as of October 1, 2011, tones)

	Needs	Availability	Availability of seeds, as a % to needs
Grain - total	62322	56385	90,5
wheat	59072	53174	90,0
barley	3134	3095	98,8
triticale	116	116	100,0

¹ Here and in table 14 – according to data of State Seed Inspection of the Ministry of Agriculture of the Kyrgyz Republic.

As of the beginning of October 2011, from 53174 tones of wheat seeds it was verified 27464 tones, of which 25765 tones were conditioned; from 3095 tones of barley seeds it was verified 1913 tones, of which 1900 tones were conditioned.

Table 14: Availability of grain crops seeds intended for autumn sowing, by territory¹

(as of October 1, 2011, as a % to needs)

	Grain - total	including	
		wheat	barley
Batken oblast	71,2	71,2	-
Djalal-Abad oblast	77,8	77,8	81,3
Issyk-Kul oblast	90,4	90,4	-
Osh oblast	90,6	90,7	88,5
Talas oblast	82,6	82,3	100,0
Chui oblast	95,8	95,4	99,4

2.1.2. Livestock Production

In January-September 2011, the production of main livestock products (excluding milk) has increased in comparison with the corresponding period of the previous year.

Table 15: Production of main livestock products in farms of all categories in January-September 2011

	Produced-total, tones				As a % to the corresponding period of the previous year			
	2010		2011		2010		2011	
	September	January-September	September	January-September	September	January-September	September	January-September
Livestock and poultry for slaughter (in live weight)	31033	245558	31145	247809	104,1	102,0	100,4	100,9
Raw milk	135042	1070591	135160	1068032	103,4	103,7	100,1	99,8
Eggs, thsd. pieces	32633	294399	33906	311973	100,9	101,1	103,9	106,0
Wool (in physical weight)	36	10845	29	11093	in 2,3 times	98,8	80,6	102,3

Production of livestock products has grown in many regions of the country.

Table 16: Production of main livestock products by territory in January-September 2011

	Livestock and poultry for slaughter (in live weight)	Raw milk	Eggs, thsd. pieces	Wool (in physical weight)
	<i>Tones</i>			
Kyrgyz Republic	247809	1068032	311973	11093
Batken oblast	17923	72423	15433	649
Djalal-Abad oblast	37691	219469	39563	1814
Issyk-Kul oblast	32546	148697	58984	1819
Naryn oblast	33406	91631	5063	1836
Osh oblast	51809	212424	36407	2190
Talas oblast	16594	58286	16447	1303
Chui oblast	56615	259393	137906	1447
Bishkek city	261	630	1155	8
Osh city	964	5079	1015	27
	<i>As a % to the previous year</i>			
Kyrgyz Republic	100,9	99,8	106,0	102,3
Batken oblast	100,2	98,7	93,9	102,2
Djalal-Abad oblast	102,0	100,7	106,3	103,2
Issyk-Kul oblast	100,6	100,3	106,4	101,0
Naryn oblast	100,3	100,3	100,2	101,1
Osh oblast	101,4	101,6	103,3	101,4
Talas oblast	100,4	88,9	96,6	103,7
Chui oblast	100,6	100,0	109,6	104,6
Bishkek city	97,4	80,5	99,8	90,6
Osh city	100,2	101,9	101,2	100,0

2.1.3. Producer Price Index of Agricultural Production

In January-September 2011, producer prices for sold *agricultural products* have increased by 1,5 times in comparison with the corresponding period of the previous year.

Table 17: Producer price index of agricultural production
(as a %)

	Total		including for production			
	to the previous period	to December of the previous year	Crop production		Livestock	
			to the previous period	to December of the previous year	to the previous period	to December of the previous year
January	106,3	106,3	112,9	112,9	99,0	99,0
February	104,4	110,9	106,5	120,3	101,8	100,8
March	99,5	110,5	99,9	119,0	100,3	101,1
April	102,4	113,0	104,0	123,8	100,2	101,3
May	106,0	119,9	100,0	123,8	114,0	115,5
June	100,1	120,0	103,0	127,5	96,8	111,8
July	110,3	132,4	95,8	122,1	128,5	143,7
August	94,3	125,0	91,7	112,2	96,7	138,9
September	96,9	121,0	89,6	100,6	103,3	143,5

In comparison with January-September 2011, the highest growth of prices for grain – in 2,0 times, potatoes – in 1,7 times, vegetables - in 1,5 times and meat – in 1,4 times was noted.

Table 18: Producer price index of selected types of agricultural production in January-September 2011
(as a %)

	Grain - total	Wheat	Vegetables	Potatoes	Meat (in live weight)	Raw milk	Eggs
<i>To the previous month</i>							
January	117,3	114,9	104,6	138,0	104,0	88,5	105,5
February	115,6	115,2	110,4	93,6	103,3	97,8	108,4
March	103,7	106,9	99,7	90,1	99,7	102,2	97,8
April	109,2	107,9	98,6	107,8	100,9	99,7	87,9
May	102,5	104,2	100,4	88,8	112,0	119,7	108,0
June	100,0	103,7	105,7	102,3	97,8	95,8	82,1
July	89,8	73,9	94,6	103,2	140,4	102,2	121,2
August	106,0	95,2	75,7	77,7	96,6	96,2	95,6
September	88,8	96,3	101,3	81,5	103,5	101,3	107,7
<i>To the corresponding period of the previous year</i>							
January	174,6	193,9	165,7	229,3	112,6	90,3	109,0
February	197,5	220,6	185,6	190,0	116,8	100,9	125,6
March	204,9	229,1	179,6	165,7	116,5	100,9	117,1
April	227,6	252,6	175,4	186,8	117,6	99,9	104,3
May	225,9	249,0	168,5	178,1	132,8	138,7	111,5
June	214,0	250,9	171,0	201,8	131,4	135,0	91,9
July	193,3	188,9	150,6	152,9	186,5	149,3	117,3
August	181,3	152,5	111,9	142,8	178,9	134,1	109,9
September	158,2	142,0	98,0	125,5	180,9	136,6	128,0

	Grain - total	Wheat	Vegetables	Potatoes	Meat (in live weight)	Raw milk	Eggs
January-September	196,4	205,8	153,1	174,0	141,3	118,4	112,5

2.1.4. Trade of Basic Foodstuffs

According to preliminary data, the share of foodstuff import in total import value for 9 months of 2011 has made up 12,9%, export – 9,1%.

Table 19: Import and export of basic foodstuffs
(thsd. tons)

	January-September	
	2010	2011*
Import		
Bakery products expressed in grain	313,1	317,6
Sugar and confectioneries	56,9	70,7
Vegetable oil	27,9	24,9
The share of foodstuff in total import value, %	12,4	12,9
Export		
Milk and dairy products expressed in milk	55,7	40,6
Sugar and confectioneries	0,6	0,7
The share of foodstuff in total export value, %	9,4	9,1

* Data are preliminary.

2.1.5. Availability of Food Per Capita

The analysis of food balance shows that the availability of foodstuffs per capita on average per month remains stable (see Table 20 and Annex 3).

Table 20: Level of consumption of basic foodstuffs
(per capita, kg per month)

	January-September	
	2010	2011*
Bakery products (expressed in grain)	16,4	16,3
of which wheat and wheat processed products (expressed in grain)	13,4	14,1
Potatoes	8,3	8,3
Vegetables and melons	12,1	12,0
Fruits and berries	2,3	2,3
Sugar and confectioneries	1,6	1,5
Meat and meat products	3,3	3,3
Milk and dairy products	17,8	17,7
Eggs, pieces	5,6	5,7
Vegetable fats	0,7	1,0

*Data are preliminary

More detailed information is provided in Annex (table 3 «Food balance»²).

² Food balances were compiled in accordance with «Methodology of calculation of basic foodstuff balance», approved by the Decree of the National Statistical Committee of the Kyrgyz Republic from September 15, 2010, №19.

Section III. Access to Food

Access: Foodstuff must be accessible both in terms of their physical availability and in terms of purchasing power.

3.1. Consumer Price Analysis

Inflation rate for 9 months of 2011 has made up 4,4%, while for the same period of the previous year it made up 10,3%. In the 1st half of 2011, monthly average price growth made up 1,2%, while in the IIIrd quarter of 2011, it was observed the slowdown of price growth rate on average up to 99,1% per month.

Prices for foodstuff and alcoholic beverage have increased by 3,7% in comparison with December 2010 due to their decrease by 7,3% in the IIIrd quarter of 2011. In January-September 2010, food products increased by 12,2%, and the highest price growth was from July to September, when price growth rate on average per month made up 2,8%.

Since the beginning of 2011, bakery products and cereals have increased by 6,6% and the significant share of household expenditures belong to it. But, in the 2nd quarter of 2011, prices for bakery products and cereals have decreased and this decrease has continued also in the 3rd quarter of 2011. So, in the 3rd quarter of 2011, prices for bakery products and cereals have decreased in general by 5,4%, that was mainly the result of decrease of prices for flour (by 9,7%) and bread (by 0,9%). However, in comparison with December of the previous year, prices for flour have increased by 4,4%, bread – by 7,0%. Also, since the beginning of 2011, prices for cereals have increased in 1,8 times, pasta – by 16,7%, rice – by 4,7%.

For 9 months of 2011, prices for fresh meat have increased by 27,3%, of which beef – by 28,7%, mutton – by 29,5%.

Dairy products, cheese and eggs have decreased, in general, by 2,4% in comparison with December 2010, due to decrease of prices by 6,8% in the 2nd quarter of 2011.

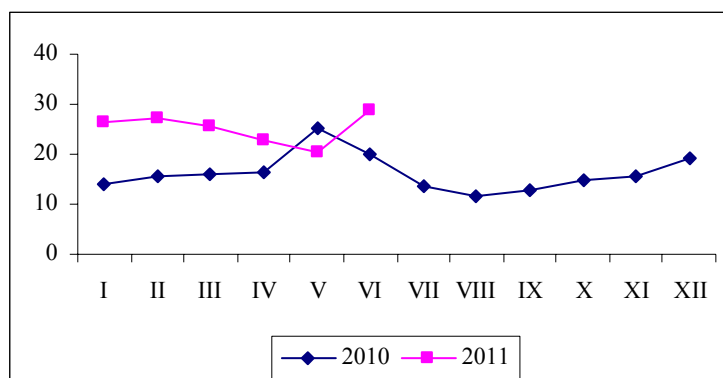
In January-September 2011, price for vegetable oil has increased by 4,5%.

Since the beginning of 2011, prices for fruits and vegetables have decreased by 29,3%, of which fruits – by 23,3%, vegetables – by 31,5%.

Potatoes. During the 3rd quarter of 2011, average consumer prices for potatoes have decreased from 26,22 soms per kilo in July to 15,17 soms in September, and the decrease has made up 42%. In comparison with the 3rd quarter of 2010, the average consumer price has increased by 63,6% and made up 20,66 soms per kilo.

Graph 1: Monthly average consumer prices for potatoes

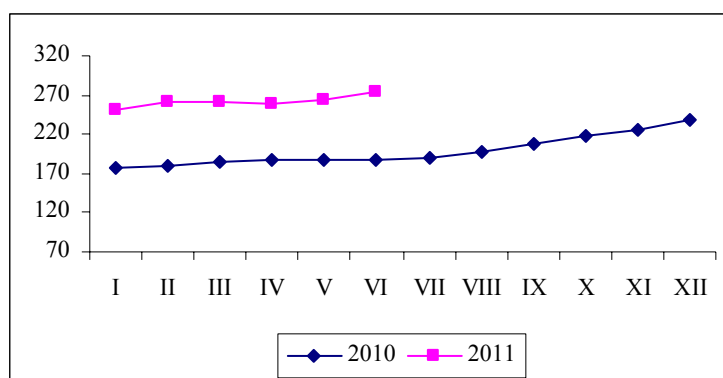
(soms per kg.)



Mutton. In the 3rd quarter of 2011, the average consumer price for mutton has increased from 200,62 soms to 297,11 soms per kilogram or the increase has made up 48,1 % in comparison with the 3rd quarter of 2010.

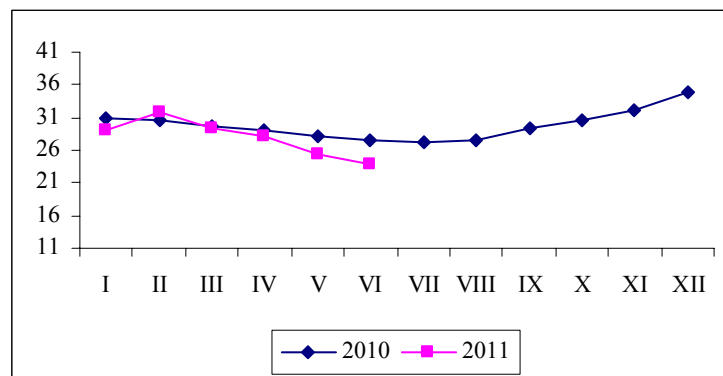
Beef. On average from July to September 2011, prices for beef have increased from 289,56 soms per kilogram in July to 307,09 soms in September and in comparison with the 3rd quarter of 2010 their growth have made up 50,5%.

Graph 2: Monthly average consumer prices for beef
(soms per kg.)



Fresh milk. During the 3rd quarter of 2011, price for milk has increased by 13,1% and in comparison with the 3rd quarter of 2010, average consumer price decreased by 18,2% and made up 22,97 soms per kilogram.

Graph 3: Monthly average consumer prices for fresh milk
(soms per kg.)



3.2. Money Income of Population

According to results of households sampling survey, nominal money income per capita in the 1st quarter of 2011 was valued at 2710,8 KG soms per month and in comparison with the previous year have increased by 14,5 %. The main source of population money income was income from labour activity, its share in income structure made up 64,4%. The second significant article about population income was incomes from social transfers – 16,4% and from sale of agricultural output produced in private subsidiary plot – 13,9%.

Monthly average per capita real money income of the population in the 1st quarter of 2011 was valued at 2253,9 KG soms and in comparison with the corresponding period of the previous year decreased by 4,8%.

Size of average per capita disposable income was valued at 2566,5 KG soms. Average per capita disposable money incomes of population living in Bishkek city (by 646,4 soms), Issyk-Kul oblast (550,6 soms) and Chui oblast (by 141,8 soms) were higher than average republican level. Disposable incomes of population living in Batken oblast (2591,3 soms) and Osh oblast (2452,3 soms) were close to average republican level. Incomes of population living in Naryn oblast (1980,1 soms), Djalal-Abad oblast (2071,4 soms), Talas oblast (2127,3 soms) were considerably less than average republican level.

The structure of average per capita disposable money incomes of households differs significantly depending on their place of residence. In urban areas, income from labour activity in total revenue has made up 76,9%, in rural areas – 52,4%. The second most important source of income in rural areas was the proceeds of the sale of products produced in private subsidiary plots of population and their share made up 28,1%.

Distribution of total money income by quintile groups of population is for the benefit of 20 % of population with the highest incomes, who have concentrated 48% of all money incomes.

Table 21: Population money income by quintile groups
(as a percent)

	1 st quarter	
	2010	2011
Money income -total	100	100
including 20 percent groups		
the first (with the lowest income)	5,9	5,1
the second	10,6	9,7
the third	15,5	14,7
the fourth	22,9	22,5
the fifth (with the highest income)	45,0	48,0
Income ratio of 20% highest and 20% lowest income groups of population, in times	7,6	9,4

The monthly average nominal wages/salaries per employee in January-August 2011 (excluding small enterprises) was valued at 8498 KG soms and in comparison with January-August 2010 has increased by 25,8%, and its real size calculated including consumer price index has increased by 4,1%.

Based on official exchange rate stated by the National Bank of the Kyrgyz Republic, monthly average wage/salary in January-August 2011 has made up 183,5 US dollars.

Table 22: Monthly average nominal and real wages/salaries by territory¹
in January-August 2011

	Soms	As a percent to the corresponding period of the previous year		Real salaries/wages as a % to the corresponding period of the previous year
		2010	2011	
Kyrgyz Republic	8498	112,7	125,8	104,1
Batken oblast	6241	113,2	137,1	109,6
Djalal-Abad oblast	7477	110,8	127,3	104,4
Issyk-Kul oblast	6098	110,9	134,1	111,2
Naryn oblast	7762	110,6	132,2	102,1
Osh oblast	5310	109,7	149,9	119,7
Talas oblast	6399	124,0	128,3	107,6

	Soms	As a percent to the corresponding period of the previous year		Real salaries/wages as a % to the corresponding period of the previous year
		2010	2011	
Chui oblast	7118	114,2	124,9	103,9
Bishkek city	11627	112,1	120,2	100,8
Osh city	7670	116,2	121,7	97,2

¹ Excluding small enterprises.

In January-August 2011, wages/salaries of employees engaged in financial activity, transport and communication, production and distribution of energy and electricity, gas and water was significantly higher than average republican level. Its lowest level was in education, health, agriculture, provision of communal, social and personal services.

In January-August 2011, growth of wage/salary was observed in all types of economic activity in comparison with the same period of the previous year, but the significant increase of wages/salaries of employees was in the field of education and health.

The sum of total debt on payment of wages/salaries as of September 1, 2011 by country as a whole has increased by 4,7% in comparison with the same date of 2010, and has decreased by 9% in comparison with the same date of the previous month.

Table 23: Total debt on payment of salaries/wages on the territory¹ as of September 1, 2011

	Mln. Soms	As a % to the corresponding period of	
		the previous year	the previous month
Kyrgyz Republic	258,2	104,7	91,0
Batken oblast	41,0	111,7	127,3
Djalal-Abad oblast	47,4	97,5	84,8
Issyk-Kul oblast	30,1	93,5	109,7
Naryn oblast	8,8	217,7	57,7
Osh oblast (including Osh city)	32,3	84,1	65,9
Talas oblast	5,7	124,5	111,0
Chui oblast	68,3	115,3	98,4
Bishkek city	24,6	107,2	84,2

¹ Excluding small enterprises.

Section IV. Additional materials

Poverty level in the Kyrgyz Republic in 2010

Well-being of the population of the Kyrgyz Republic in 2010 was measured on the basis of sampling survey of 5016 household budgets in accordance with "Methodology of determining the poverty line" approved by the Decision of the Government of the Kyrgyz Republic dated by March 25, 2011, № 115.

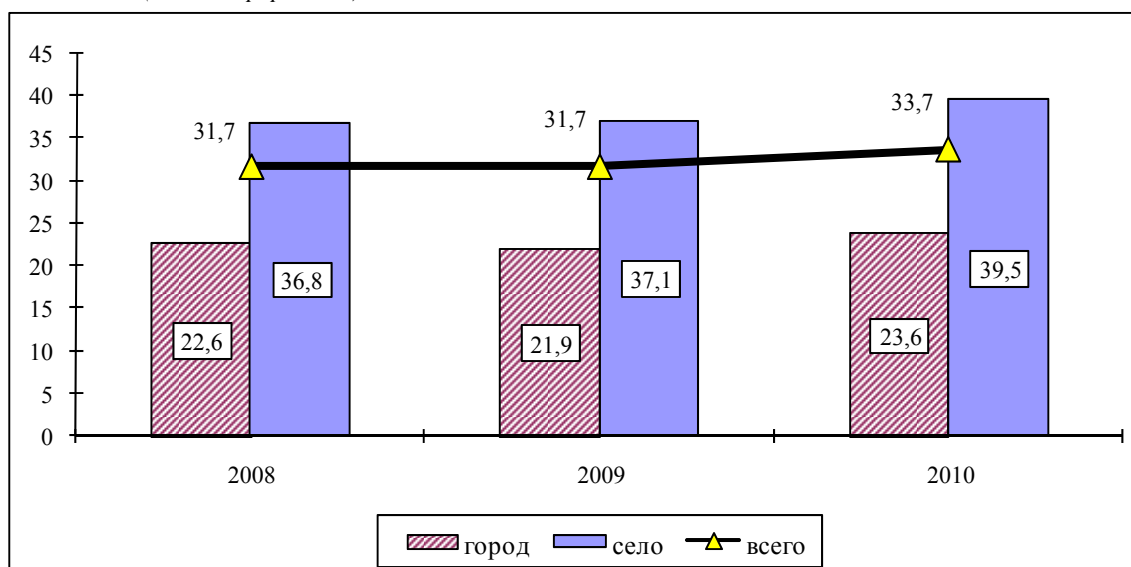
Results of interview show that the poverty level in 2010 estimated on the basis of consumer expenditures by country as whole made up 33,7% and increased by two percentage points in comparison with the previous year. As a threshold value, poverty line of the previous year indexed for average annual CPI was applied to assess the poverty level. In 2010, value of total poverty line made up 20937,08 KG Soms per capita, extreme poverty – 12608,44 KG Soms.

Poverty level in urban settlements increased by 1,7 percentage points and in rural area - by 2,4 percentage points.

In 2010, 1 mln. 846,2 thsd. people of which 74,4% habitants of rural settlements lived under the poverty line.

Graph 4: Change of poverty level by place of residence

(as a % to population)



Prevalence of poverty by country regions is uneven.

The positive changes in improvement of well-being of the population were observed in Issyk-Kul oblast where poverty level has decreased by 8,1 percentage points and in Bishkek city – by 5,4 percentage points in comparison with the previous year.

In other regions of the country it is observed the poverty growth in comparison with the previous year. Poverty level in Naryn oblast increased by 9,4 percentage points, in rural area – by 10,3 percentage points, in urban settlements – by 4,4 percentage points.

The poverty level in Talas oblast increased by 9,3 percentage points. Along with this, the poverty level of rural and urban population has increased by 9,3 and 9,4 percentage points, respectively.

The poverty level in Djalal-Abad oblast increased by 7,8 percentage points, in urban settlements – by 10,3 percentage points, in rural area – by 7,4 percentage points.

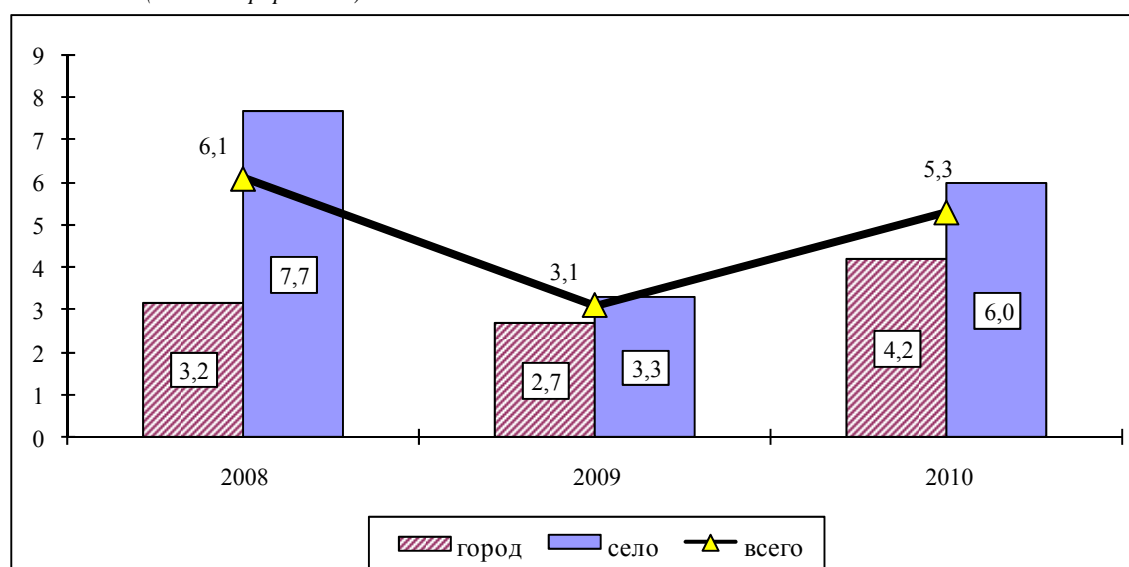
The poverty level in Osh oblast (including Osh city) increased by 3,6 percentage points. Along with the decrease of poverty level in rural area by 2 percentage points, in urban area it has been observed its increase by 19,6 percentage points.

Table 24: Change of poverty level by territory
(as a % to population)

	2008	2009	2010
Kyrgyz Republic	31,7	31,7	33,7
Batken oblast	20,7	31,5	33,6
Djalal-Abad oblast	40,1	36,9	44,7
Issyk-Kul oblast	52,2	46,1	38,0
Naryn oblast	42,7	44,1	53,5
Osh oblast	37,5	38,3	41,9
Talas oblast	43,0	33,0	42,3
Chui oblast	15,8	21,2	21,9
Bishkek city	15,2	13,2	7,9

In 2010, the extreme poverty level has made up 5,3% and increased by 2,2 percentage point as compared to the previous year, and the extreme poverty level in rural area increased by 2,7 percentage point and in urban area – by 1,5 percentage points.

Graph 5: Change of extreme poverty level by place of residence
(as a % to population)



Level of poverty depth by country as a whole has increased from 5,1% in 2009 to 7,5% in 2010, and the poverty severity increased from 1,8% to 2,5%, respectively.

Consumption cost directly depended from population incomes are used for estimation of poverty level. In 2010, disposable cash/money incomes per capita made up 2494,4 KG Soms per month and have increased by 7,9% in comparison with the previous year, and their real growth made up 0,9%. A major source of cash incomes of the population was incomes from labor activity, which share in the structure of disposable incomes made up 61,4%, incomes from the sale of agricultural products produced in private subsidiary plots made up 17,4%, and incomes from social transfers – 13,6%.

The share of wage in incomes from labor activity made up 39,2%, individual labor activity – 14,3%. Besides, 7,5% is related to the labor activity of the population performed beyond the Kyrgyz Republic. Labor migration, mostly, is specific for the population of Batken, Djalal-Abad and Osh oblasts where

incomes from labor activity beyond the country has made up 13-15% in the structure of disposable incomes of the population of oblast.

Table 25: Structure of disposable money/cash incomes of population by territory
(as a %)

	Labour activity		Social transfers	Income from private subsidiary plot	Other income
	Total	Including beyond the Kyrgyz Republic			
Kyrgyz Republic	61,4	7,5	13,6	17,4	7,6
Batken oblast	63,1	15,3	13,0	13,8	10,1
Djalal-Abad oblast	65,3	13,2	10,2	20,6	4,0
Issyk-Kul oblast	40,6	1,0	12,1	42,8	4,4
Naryn oblast	39,9	0,4	25,6	25,2	9,4
Osh oblast	59,6	14,0	13,1	17,9	9,4
Talas oblast	32,6	0,0	11,8	48,0	7,6
Chui oblast	62,0	0,3	15,4	13,4	9,2
Bishkek city	77,8	0,4	14,8	0,1	7,3

Influence of the external factor on material welfare of the population of southern regions is obvious. Estimations show that at an exception of labour migrants incomes from consumption cost, poverty in Djalal-Abad oblast is increased from 44,7 to 55,1%, Batken oblast – from 33,6 to 48,3% and Osh oblast – from 41,9 to 53,4%, while in other regions its level practically is not changed. Distinctively, that the population, which fell into the category of the poor people, at the exclusion of labour migrants incomes, was almost entirely below the extreme poverty line, and its share increased from 5,3 to 12,4%.

Table 26: Poverty level excluding incomes from labour activity beyond the Kyrgyz Republic
(as a % to population)

	2008	2009	2010
Kyrgyz Republic	42,3	40,8	40,0
Batken oblast	47,3	53,3	48,3
Djalal-Abad oblast	50,7	53,4	55,1
Issyk-Kul oblast	52,3	46,1	39,6
Naryn oblast	42,7	44,2	54,0
Osh oblast	61,8	53,7	53,4
Talas oblast	43,0	33,0	42,3
Chui oblast	17,2	23,1	22,0
Bishkek city	15,2	13,5	8,3

In 2010, volume of deficit of population funds that live under the poverty line made up 8,6 billion KG Soms, that higher by 2,1 billion KG Soms than in the previous year.

Still, the population density being near the poverty line is high. Calculations show that the share of poor people would increase by 5 percentage points at the increase of inflation rate in 2010 by 5%, at constant current value of the welfare indicator. Inflation growth, which is not accompanied by growth of welfare, increases the probability of transition to the category of poor (poverty) population with the consumption level that is slightly higher than the poverty line.

List of Abbreviations

GDP	Gross Domestic Product/ Валовой внутренний продукт (ВВП)
WHO	World Health Organization/ Всемирная организация здравоохранения (ВОЗ)
GMCL	Guaranteed Minimum Consumption Level/Гарантированный минимальный уровень потребления (ГМУП)
UMB	Unified (one-time) Monthly Benefit (payment)/Единые ежемесячные пособия (ЕЕП)
EC	European Commission/Европейская Комиссия (ЕК)
CPI	Consumer Price Index for goods and paid services to population/Индекс потребительских цен (ИПЦ) на товары и платные услуги населению
EC FSP	European Commission Food Security Program/Программа Продовольственной Безопасности Европейской Комиссии (ППБ ЕК)
FAO	UN Food & Agriculture Organization/Продовольственная и Сельскохозяйственная Организация ООН (ФАО)
MCB	Minimum Consumer Budget/Минимальный потребительский бюджет (МПБ)

Methodological explanations

The unemployed – people at the age of 16 years and over who during the period under review had no job (income-generating occupation); who were in search for a job i.e. applied to state employment service or used alternative ways of job finding as well as those who were ready to start working.

Gross Domestic Product (GDP) – a general indicator of economic activity of the country, which is calculated in current market prices (GDP nominal) and in comparable prices (GDP real).

Consumer price index for goods and paid services to population (CPI) – characterises the change in the general price level for goods and services over time. The index measures the correlation of the value of actually fixed set of goods and services during the given period to its value during the basic period.

Monthly average nominal salary is calculated by dividing actually accrued salary fund of the staff and part-time employees to the number used for the calculation of average salary and to the number of months in a reporting period.

Average daily per capita calorie characterizes energy value and calories in consumed food products per one household member as well as chemical composition in proteins and fats.

Official unemployment level – is the ratio of people officially registered as unemployed to the number of economically active population expressed in percent.

Availability of food refers to the physical quantities of food at the disposal of the population as a result of domestic food production or market. At the national level availability of food is defined as a combination stocks, commercial import, food aid and own production. Following aspects also refer to availability: climatic conditions, the areas harvested, animal numbers and productivity, producer prices for food, food prices in neighboring countries, and the national policies which determine production, trade, distribution and pricing.

The availability of food per capita is calculated using food balance. A food balance shows for each basic foodstuff the total physical availability and consumption of that foodstuff over a given period of time, usually for 1 year. Total **physical availability** is the sum of opening stocks, production and import in that product in a given period of time. **Total use** is human consumption + animal feed + seeds + losses + exports. Drawn up over a succession of years, food balances usually reveal a trend in total availability, import, export, and the availability of food for human consumption and for fodder. Dividing the annual amount of food available for human consumption by the population gives a key indicator of availability: the average availability of food per capita per year. This measure of food availability is a national average, which does not take into account households' access (i.e. ability to produce, purchase or otherwise obtain) to food.

Access to food refers to the ability of household members to obtain adequate safety and appropriate foods to meet their needs for a healthy and active life. Access can be through production for own consumption, market purchases or donations/transfers. Access differs between households according to employment status, income, family size, location etc. Elements that affect the access also include social security, payment delays in salaries and wages, inflation, the cost of essential foodstuff and other goods and services. National policy, which affects employment, income and inflation, also affects significantly households' access to food.

Use of food refers to the selection, composition, preparation and allocation of food within the household. Utilization of food refers to the ability of the human body to take and use food within the body and convert food into energy. Food use covers knowledge of appropriate diets, and proper allocation of food within the family. The ability of the body to utilize food is affected by its state of health and access to clean drinking water, access to basic health services, food cooking and food storage. The ultimate measure of food security is the nutritional status of the population.

Annex

Review of hydro-meteorological conditions on the territory of the Kyrgyz Republic in the 3rd quarter of 2011.

(Source: according to data of the State Agency on Hydrometeorology of the Ministry of Emergency of the Kyrgyz Republic)

Agro meteorological conditions:

July. Monthly average temperature of air in the most regions was close to the normal, in Jaiyl, Suzak and Uzgen regions was above the normal by 1 degree, in Alai region was below the normal by 1 degree.

Rainfall in Kara-Buura and Alai regions was above the normal by 123-131%, in Suusamyр Valley, Chychkan range, Alai Valley in the east and in the zone of farming of Naryn oblast was close to normal by 87-112%. Rainfall in other territory was below the normal by 6-63 %. There was no rainfall in Djalal-Abad and Leilek rayons.

August. Monthly average temperature of air in the most regions was above the normal by 1...2 degrees, in Toktogul, Issyk-Ata, Batken, Kara-Suu, Alai regions, in mountain regions of Chui oblast, in Issyk-Kul howe and in Chon-Ashuu Pass was close to multiyear normal.

Rainfall in the most regions of Chui, Issyk-Kul oblasts, in Suzak, Batken, Toktogul and jungal regions was above the normal by 121-217%, in Talas and Osh oblasts, and in Naryn rayon was below to normal by 20-70%, in Leilek and Kara-Kulja rayons was 0-7% of normal, in other territory was close to normal by 75-113%.

September. Monthly average temperature of air in the most regions was above the normal by 1...1,5 degrees, in Toktogul region was close to climatic normal.

Rainfall in the most regions of Chui oblast, in Chychkan and Kumtor ranges, and in the east of Issyk-Kul region was above the normal by 116-233 %, in the zone of farming of Naryn oblast, in the east of Alai Valley, in Jaiyl region, in the west of Issyk-Kul region was close to normal by 83-106%, in other territory was below the normal by 20-70%. There was no rainfall in Batken, Kara-Suu, Nookat and Suzak regions within the month.

Hydrological conditions in September 2011:

In September, water content of the most of rivers of the republic was within the norm. Increased outlet of rivers as Ala-Archa, Sokuluk, Kumush Too, Uzun Akmat, Kara Kuldja, Tar, Kurshab, Ak Bura, Kyzyl Suu and rivers of Issyk-Kul basin was normal (130-170%). Decreased outlet of rivers as Karakol, Tentek, Sai, Yassy, Kegart and Changet was normal (51-77%).

Water inflow into the following reservoirs was normal: Orto-Tokoi - 148%, Kirov – 151%, Toktogul – 114%.

Water inflow in Toktogul reservoir has calculated according to the balance, because the Uch Terek hydro station on Naryn river is in the backwater (hydrostatic head) from filled Toktogul reservoir.

Condition of Reservoirs as of September 30, 2011

Reservoirs	Changes during a month, mln. m ³	Volume of water in 2011		Volume of water in 2010	
		mln. m ³	as a % of volume	mln. m ³	as a % of volume
Toktogul	+222	19538	100	19518	100
Orto-Tokoi	+10	59	13	174	37
Kirov	-37	59	11	140	25

**Таблица 2: Средние потребительские цены на продукты питания
в разрезе регионов во III квартале 2010-2011 гг.**
(сом/кг)

Table 2: Average consumer prices for food by regions in the IIIrd quarter of 2010-2011
(soms / kg)

Область /Oblast	III квартал / III quarter		2011		
	2010	2011	июль/ July	август/ August	сентябрь/ September
Картофель / Potatoes					
Баткенская/ Batken	10,96	18,67	21,88	18,63	15,50
Джалал-Абадская / Djalal-Abad	9,63	17,62	21,00	16,85	15,00
Иссык-Кульская / Issyk-Kul	9,82	15,96	23,75	13,00	11,13
Нарынская / Naryn	12,83	20,82	28,00	21,13	13,33
Ошская / Osh	8,93	16,17	18,75	15,75	14,00
Таласская / Talas	11,74	13,33	18,75	11,79	9,45
Чуйская / Chui	12,84	17,50	21,25	16,83	14,41
г.Бишкек/ Bishkek city	14,27	23,00	29,70	23,38	15,93
В среднем по республике / Average by the Republic	12,63	20,66	26,22	20,59	15,17
Молоко свежее / Fresh milk					
Баткенская/ Batken	22,33	27,50	27,50	27,50	27,50
Джалал-Абадская / Djalal-Abad	27,00	21,67	20,00	20,00	25,00
Иссык-Кульская / Issyk-Kul	39,82	17,50	15,00	17,50	20,00
Нарынская / Naryn	14,14	17,62	17,00	17,00	18,85
Ошская / Osh	31,17	18,97	17,50	18,75	20,67
Таласская / Talas	16,81	20,76	20,21	20,00	22,08
Чуйская / Chui	17,71	21,88	20,00	21,88	23,75
г.Бишкек/ Bishkek city	28,94	24,44	23,75	23,33	26,25
В среднем по республике / Average by the Republic	28,08	22,97	21,96	22,12	24,83
Мука 1 сорта / Flour, 1st grade					
Баткенская/ Batken	22,08	29,58	29,00	29,75	30,00
Джалал-Абадская / Djalal-Abad	20,85	26,67	28,38	26,63	25,00
Иссык-Кульская / Issyk-Kul	21,09	30,31	32,25	30,75	27,92
Нарынская / Naryn	20,98	28,67	30,50	27,75	27,75
Ошская / Osh	21,44	31,08	32,08	31,00	30,17
Таласская / Talas	16,25	22,46	23,50	22,50	21,38
Чуйская / Chui	23,21	30,89	31,75	31,33	29,60
г.Бишкек/ Bishkek city	22,44	31,35	32,63	32,15	29,28
В среднем по республике / Average by the Republic	22,06	30,71	31,91	31,23	28,98
Рис среднезерный / Rice (middle sized)					
Баткенская/ Batken	68,75	73,06	70,00	73,75	75,42
Джалал-Абадская / Djalal-Abad	56,33	64,33	64,58	65,42	63,00
Иссык-Кульская / Issyk-Kul	53,54	61,25	62,08	60,83	60,83
Нарынская / Naryn	57,22	58,50	58,75	58,75	58,00
Ошская / Osh	77,19	84,17	83,75	83,75	85,00
Таласская / Talas	55,40	58,42	58,61	58,50	58,14
Чуйская / Chui	53,89	62,34	62,33	62,33	62,35
г.Бишкек/ Bishkek city	58,06	61,77	61,84	62,19	61,28
В среднем по республике / Average by the Republic	60,56	65,52	65,46	65,81	65,30

Таблица 2: (продолжение)

Table 2: (continued)

Область / Oblast	III квартал / III quarter		2011		
	2010	2011	июль/ July	август/ August	сентябрь/ September
Сахар-песок / Granulated sugar					
Баткенская / Batken	50,67	68,50	68,00	68,00	69,50
Джалал-Абадская / Djalal-Abad	51,98	67,75	67,00	69,00	67,25
Иссык-Кульская / Issyk-Kul	48,40	66,14	68,13	70,12	60,17
Нарынская / Naryn	50,13	65,52	66,95	70,45	59,15
Ошская / Osh	52,44	67,04	65,75	69,13	66,25
Таласская / Talas	50,35	67,82	65,89	72,75	64,83
Чуйская / Chui	48,68	66,66	68,00	72,08	59,90
г.Бишкек/ Bishkek city	49,98	67,22	67,50	72,70	61,46
В среднем по республике / Average by the Republic	50,36	67,18	67,27	71,58	62,69
Лук / Onions					
Баткенская / Batken	9,55	16,42	20,00	15,00	14,25
Джалал-Абадская / Djalal-Abad	8,95	17,33	20,00	16,00	16,00
Иссык-Кульская / Issyk-Kul	13,93	18,33	21,88	17,13	16,00
Нарынская / Naryn	15,68	20,71	25,00	22,50	14,63
Ошская / Osh	10,79	17,53	19,75	17,67	15,17
Таласская / Talas	16,33	21,75	24,38	21,88	19,00
Чуйская / Chui	9,73	18,69	22,81	17,50	15,75
г.Бишкек/ Bishkek city	18,67	22,44	27,76	21,02	18,53
В среднем по республике / Average by the Republic	15,39	20,68	25,10	19,57	17,37
Хлопковое масло / Cotton oil					
Баткенская / Batken	72,08	110,00	110,00	110,00	110,00
Джалал-Абадская / Djalal-Abad	80,10	108,91	110,96	108,53	107,24
Иссык-Кульская / Issyk-Kul	86,67	111,30	111,30	111,30	111,30
Нарынская / Naryn	69,32	102,78	100,00	102,78	105,56
Ошская / Osh	92,99	117,60	117,80	117,65	117,36
Таласская / Talas	73,08	97,90	98,04	97,83	97,83
Чуйская / Chui	83,62	104,41	106,32	103,45	103,45
г.Бишкек/ Bishkek city	86,77	109,02	109,08	109,08	108,88
В среднем по республике / Average by the Republic	85,88	109,85	110,18	109,80	109,57
Баранина / Mutton					
Баткенская / Batken	201,33	300,00	300,00	300,00	300,00
Джалал-Абадская / Djalal-Abad	190,00	296,25	300,00	295,00	293,75
Иссык-Кульская / Issyk-Kul	180,69	276,98	277,81	278,13	275,00
Нарынская / Naryn	184,27	281,00	291,00	280,00	272,00
Ошская / Osh	200,00	296,67	295,00	295,00	300,00
Таласская / Talas	182,13	280,58	280,00	281,25	280,50
Чуйская / Chui	170,19	261,25	265,00	260,00	258,75
г.Бишкек/ Bishkek city	208,60	303,34	304,13	307,00	298,89
В среднем по республике / Average by the Republic	200,62	297,11	298,04	298,97	294,31

Таблица 2: (продолжение)

Table 2: (continued)

Область /Oblast	III квартал / III quarter		2011		
	2010	2011	июль/ July	август/ August	сентябрь/ September
Говядина / Beef					
Баткенская/ Batken	181,33	260,00	260,00	260,00	260,00
Джалал-Абадская / Djalal-Abad	182,00	283,33	280,00	280,00	290,00
Иссык-Кульская / Issyk-Kul	183,60	296,35	290,31	298,75	300,00
Нарынская / Naryn	192,50	300,00	300,00	300,00	300,00
Ошская / Osh	182,33	278,54	275,63	280,00	280,00
Таласская / Talas	188,83	293,00	290,00	290,00	299,00
Чуйская / Chui	200,92	319,44	307,71	323,54	327,07
г.Бишкек/ Bishkek city	206,09	303,64	293,21	301,25	316,46
В среднем по республике / Average by the Republic	197,91	297,76	289,56	296,62	307,09
Конина / Horsemeat					
Баткенская/ Batken	-	-	-	-	-
Джалал-Абадская / Djalal-Abad	148,75	250,8	250,00	250,00	252,50
Иссык-Кульская / Issyk-Kul	173,67	300,0	-	-	300,00
Нарынская / Naryn	195,00	-	-	-	-
Ошская / Osh	150,00	170,0	170,00	-	-
Таласская / Talas	211,67	341,7	330,00	345,00	350,00
Чуйская / Chui	208,33	307,9	276,25	325,00	322,50
г.Бишкек/ Bishkek city	201,28	306,7	290,00	295,00	335,00
В среднем по республике / Average by the Republic	188,45	281,9	267,21	294,22	324,81
Свинина / Pork					
Баткенская/ Batken	-	-	-	-	-
Джалал-Абадская / Djalal-Abad	180,00	-	-	-	-
Иссык-Кульская / Issyk-Kul	167,08	190,83	187,50	185,00	200,00
Нарынская / Naryn	-	-	-	-	-
Ошская / Osh	190,00	204,58	200,00	200,00	213,75
Таласская / Talas	180,00	188,33	185,00	180,00	200,00
Чуйская / Chui	181,67	202,08	188,75	205,00	212,50
г.Бишкек/ Bishkek city	226,67	231,88	230,63	232,50	232,50
В среднем по республике / Average by the Republic	209,93	222,53	219,61	222,08	225,89
Куры / Chicken					
Баткенская/ Batken	104,17	200,00	200,00	200,00	200,00
Джалал-Абадская / Djalal-Abad	175,00	281,67	280,00	280,00	285,00
Иссык-Кульская / Issyk-Kul	139,17	191,67	195,00	190,00	190,00
Нарынская / Naryn	0,00	158,89	160,00	160,00	156,67
Ошская / Osh	167,94	238,75	240,00	240,00	236,25
Таласская / Talas	189,38	182,42	174,77	187,50	185,00
Чуйская / Chui	268,35	170,96	169,38	175,00	168,50
г.Бишкек/ Bishkek city	154,30	256,74	242,50	243,13	284,58
В среднем по республике / Average by the Republic	164,86	243,30	234,58	235,31	260,01
Яйца / Eggs (10 pieces)					
Баткенская/ Batken	68,42	84,58	80,00	87,50	86,25
Джалал-Абадская / Djalal-Abad	57,08	65,38	66,13	61,25	68,75
Иссык-Кульская / Issyk-Kul	49,07	59,08	55,75	59,50	62,00
Нарынская / Naryn	57,75	66,25	65,00	65,00	68,75
Ошская / Osh	58,03	65,14	65,42	65,00	65,00
Таласская / Talas	59,86	70,42	69,58	70,00	71,67
Чуйская / Chui	56,46	64,58	63,75	64,38	65,63
г.Бишкек/ Bishkek city	53,79	59,40	56,78	57,70	63,73
В среднем по республике / Average by the Republic	55,38	62,08	60,19	60,79	65,25

**Продовольственный баланс
по базовым продуктам питания**

Таблица 3.

**Table 3. Food balance
by basic foodstuffs**

Базовые продукты питания / Basic foodstuffs	Хлебопродукты/ Bread and bread products			Пшеница и продукты ее переработки/Wheat and wheat processed products			Картофель / Potatoes			Овощи и бахчевые / Vegetables and melons			Фрукты и ягоды / Fruits and berries		
	в пересчете на зерно, тыс. тонн /expressed in grain, thsd. tons			в пересчете на зерно, тыс. тонн /expressed in grain, thsd. tons			свежий, тыс. тонн / fresh, thsd. tons			свежий, тыс. тонн / fresh, thsd. tons			свежий, тыс. тонн / fresh, thsd. tons		
	2010	9 мес. 2010 / 9 mon ths 2010	9 мес. 2011 ¹ / 9 months 2011 ¹	2010	9 мес. 2010 / 9 mon ths 2010	9 мес. 2011 ¹ / 9 months 2011 ¹	2010	9 мес. 2010 / 9 mon ths 2010	9 мес. 2011 ¹ / 9 months 2011 ¹	2010	9 мес. 2010 / 9 mon ths 2010	9 мес. 2011 ¹ / 9 months 2011 ¹	2010	9 мес. 2010 / 9 mon ths 2010	9 мес. 2011 ¹ / 9 months 2011 ¹
1. Запасы на начало года / Opening stocks	1654,2	1654,2	1453,8	884,1	884,1	827,2	712,2	712,2	712,2	293,1	293,1	236,9	18,3	18,3	9,4
2. Произведено продовольствия в стране (+) / Food production in the country	1583,8	1298,3	1385,4	813,3	756,3	778,6	1339,4	781,3	798,7	969,3	803,4	787,4	193,1	146,0	161,0
3. Импортировано прод. товаров (+) / Food imports	436,0	313,1	317,6	399,8	291,2	275,5	0,7	0,7	0,7	8,9	4,0	6,0	58,0	39,6	31,6
Поступление (1-3) (+) Availability	3674,0	3265,6	3156,8	2097,2	1931,6	1881,3	2052,3	1494,2	1511,6	1271,3	1100,5	1030,3	269,4	203,9	202,0
4. Расходы на семена (-) / Expenses for seeds	137,0	74,2	78,3	91,8	30,3	33,2	316,0	295,1	297,1	0,0	0,0	0,0	-	-	-
5. На корм скоту (-) / Fodder	949,9	610,5	624,2	264,4	135,9	198,0	191,1	135,9	138,9	56,3	45,1	46,2	7,9	3,7	3,7
6. Потери (-) / Losses	63,6	58,3	54,6	20,1	14,4	14,4	61,8	45,0	45,5	16,3	14,3	13,2	11,3	8,4	8,5
7. Экспортировано прод. товаров (-) / Food exports	78,0	33,4	54,6	15,5	1,4	1,6	266,4	16,2	59,3	182,9	109,1	125,9	85,0	60,4	54,3
8. Наличие для потребления населением (-) / Availablity for consumption by the population	991,7	766,6	771,4	878,2	625,6	664,8	504,8	387,7	390,8	778,9	563,9	565,2	155,8	105,8	106,4
Использование Consumption	2220,2	1543,0	1583,1	1270,0	807,6	912,0	1340,1	879,9	931,6	1034,4	732,4	750,5	260,0	178,3	172,9
10. Запасы на конец периода / Closing stocks	1453,8	1722,6	1573,7	827,2	1124,0	969,3	712,2	614,3	580,0	236,9	368,1	279,8	9,4	25,6	29,1

¹ Предварительные данные/Preliminary data

² С учетом неучтенного экспорта/Including unaccounted export

Таблица 3.(продолжение)

Table 3. (continued)

Базовые продукты питания / Basic foodstuffs	Мясо и мясопродукты / Meat and meat products			Молоко и молочные продукты / Milk and dairy products			Яйца / Eggs			Жиры растительные / Vegetable oil			Сахар и кондитерские изделия / Sugar and confectionery		
	в пересчете на убойный вес, тыс.тонн /expressed in slaughter weight, thsd. tons			в пересчете на молоко, тыс. тонн / expressed in milk, thsd. tons			миллионов штук / million pieces			тыс. тонн / thsd. tons			в пересчете на сахар, тыс. тонн/expressed in sugar, thsd. tons		
	2010	9 мес. 2010 / 9 mon ths 2010	9 мес. 2011 ¹ / 9 months 2011 ¹	2010	9 мес. 2010 / 9 mon ths 2010	9 мес. 2011 ¹ / 9 months 2011 ¹	2010	9 мес. 2010 / 9 mon ths 2010	9 мес. 2011 ¹ / 9 months 2011 ¹	2010	9 мес. 2010 / 9 mon ths 2010	9 мес. 2011 ¹ / 9 months 2011 ¹	2010	9 мес. 2010 / 9 mon ths 2010	9 мес. 2011 ¹ / 9 months 2011 ¹
1. Запасы на начало года / Opening stocks	4,5	4,5	4,6	38,5	38,5	38,6	15,2	15,3	25,4	40,3	40,3	36,0	46,7	46,7	15,9
2. Произведено продовольствия в стране (+) / Food production in the country	187,8	138,7	136,5	1359,9	1070,6	1068,0	373,1	294,4	312,0	18,1	12,8	11,1	14,0	0,1	0,0
3. Импортировано прод. товаров (+) / Food imports	99,8	67,9	68,0	34,4	20,2	12,5	56,7	32,9	42,1	40,0	27,9	24,9	67,2	56,9	70,7
Поступление (1-3) (+) Availability	292,1	211,1	209,1	1432,8	1129,3	1119,1	445,0	342,6	379,5	98,4	81,0	72,0	127,9	103,7	86,6
4. Расходы на семена (-) / Expenses for seeds	-	-	-	-	-	-	6,3	6,5	6,9	-	-	-	-	-	-
5. На корм скоту (-) / Fodder	0,0	0,0	0,0	132,2	108,5	106,1	1,0	1,0	1,0	-	-	-	-	-	-
6. Потери (-) / Losses	0,3	0,2	0,2	1,7	1,4	1,3	0,0	0,0	0,0	0,0	0,0	0,0	0,1	0,0	0,1
7. Экспортировано прод. товаров (-) / Food exports	86,2	1,5	0,4	157,2	55,7	40,6	0,0	0,0	0,0	0,0	0,0	0,0	1,3	0,6	0,7
8. Наличие для потребления населением (-) / Availablity for consumption by the population	201,0	153,1	158,0	1103,1	829,8	837,8	412,3	262,3	268,7	62,4	32,8	45,3	110,6	74,7	70,0
Использование Consumption	287,5	154,8	158,6	1394,2	995,4	985,8	419,6	269,8	276,6	62,4	32,8	45,3	112,0	75,3	70,8
10. Запасы на конец периода / Closing stocks	4,6	56,3	50,5	38,6	133,9	133,3	25,4	72,8	102,9	36,0	48,2	26,7	15,9	28,4	15,8

¹ Предварительные данные/Preliminary data² С учетом неучтенного экспорта/Including unaccounted export

**Таблица 4: Баланс питания в виде энергетической ценности по результатам обследований
ежедневного потребления и оценки ежедневных потребностей**

(все население по демографическим группам и регионам)

**Table 4: Food Balance expressed in nutritional values and compared to calculated daily needs based on surveys of daily intake
and on calculated daily needs based on recurrent nutritional surveillance**

(total population by demographic groups and by regions)

Область/Oblast	Население, человек		Ккал в день на душу населения		Белки в день на душу населения, грамм		Жиры в день на душу населения, грамм		
	Number, people		K/Calories C/d/p		Proteins g/d/p		Fats g/d/p		
	I квартал / I quarter		I квартал / I quarter		I квартал / I quarter		I квартал / I quarter		
	2010	2011	2010	2011	2010	2011	2010	2011	
Все население	5 418 299	5 477 620							Total population
Баткенская область	433 802	441 101	2 265	2 364	56,2	58,5	67,5	70,9	Batken oblast
Джалал-Абадская область	1 023 132	1 036 644	2 478	2 371	66,1	64,5	60,4	62,4	Djalal-Abad oblast
Иссык-Кульская область	441 323	444 520	2 345	2 291	59,5	61,4	60,8	62,6	Issyk-Kul oblast
Нарынская область	259 378	262 137	2 117	2 016	55,4	57,1	51,5	50,4	Naryn oblast
Ошская область	1 376 957	1 386 734	2 164	2 232	55,3	58,6	56,9	59,8	Osh oblast
Таласская область	228 995	231 819	2 461	2 499	62,3	68,4	64,6	61,9	Talas oblast
Чуйская область	808 245	814 870	2 602	2 565	69,1	68,3	73,8	72,1	Chui oblast
г.Бишкек	846 467	859 795	2 534	2 319	70,6	64,2	70,2	65,1	Bishkek city
Суточное потребление			2 380	2 338	62,5	62,6	63,4	63,7	Daily intake
Суточные потребности			2 101	2 101	73,0	73,0	71,0	71,0	Daily needs
Баланс: (+) или (-)			279	237	-11	-10	-8	-7	Balance: (+) or (-)

Таблица 4: (продолжение)
Table 4: (continued)

Область/Oblast	Население, человек		Ккал в день на душу населения		Белки в день на душу населения, грамм		Жиры в день на душу населения, грамм		
	Number, people		K/Calories C/d/p		Proteins g/d/p		Fats g/d/p		
	I квартал / I quarter		I квартал / I quarter		I квартал / I quarter		I квартал / I quarter		
	2010	2011	2010	2011	2010	2011	2010	2011	
Население пенсионного возраста	561 119	467 219							Pensioners
Баткенская область	36 981	35 051	2 507	2 631	64,1	65,1	75,3	81,9	Batken oblast
Джалал-Абадская область	100 909	81 870	2 681	2 559	74,0	70,0	68,7	69,5	Djalal-Abad oblast
Иссык-Кульская область	52 642	41 046	2 762	2 672	68,9	72,0	75,0	78,2	Issyk-Kul oblast
Нарынская область	27 946	22 684	2 187	2 083	58,4	59,6	56,0	55,2	Naryn oblast
Ошская область	110 504	98 798	2 549	2 604	65,4	69,1	71,7	73,6	Osh oblast
Таласская область	18 986	15 183	2 723	2 823	69,6	79,7	73,9	75,0	Talas oblast
Чуйская область	110 087	87 352	3 098	3 146	85,7	85,3	97,1	95,3	Chui oblast
г.Бишкек	103 063	85 235	2 905	2 857	84,8	81,9	85,8	87,1	Bishkek city
Суточное потребление			2 751	2 733	74,5	74,5	78,6	79,6	Daily intake
Суточные потребности			2 100	2 100	71,0	71,0	72,0	72,0	Daily needs
Баланс: (+) или (-)			651	633	4	3	7	8	Balance: (+) or (-)

Таблица 4: (продолжение)
Table 4: (continued)

Область/Oblast	Население, человек		Ккал в день на душу населения		Белки в день на душу населения, грамм		Жиры в день на душу населения, грамм		
	Number, people		K/Calories C/d/p		Proteins g/d/p		Fats g/d/p		
	I квартал / I quarter		I квартал / I quarter		I квартал / I quarter		I квартал / I quarter		
	2010	2011	2010	2011	2010	2011	2010	2011	
Население трудоспособного возраста	2 763 148	2 947 494							Working age population
Баткенская область	212 944	228 044	2 550	2 655	63,6	65,9	76,4	79,3	Batken oblast
Джалал-Абадская область	517 219	557 889	2 706	2 578	72,0	70,1	66,3	67,9	Djalal-Abad oblast
Иссык-Кульская область	226 800	240 484	2 572	2 543	65,7	68,2	65,9	69,3	Issyk-Kul oblast
Нарынская область	119 145	125 653	2 378	2 278	62,2	64,7	57,0	57,4	Naryn oblast
Ошская область	658 293	690 861	2 407	2 435	61,7	64,2	62,3	65,0	Osh oblast
Таласская область	108 409	119 923	2 889	2 829	73,0	77,2	76,4	70,1	Talas oblast
Чуйская область	440 248	473 484	2 803	2 738	74,3	73,1	78,7	77,1	Chui oblast
г.Бишкек	480 090	511 156	2 736	2 485	76,0	68,6	76,0	69,8	Bishkek city
Суточное потребление			2 626	2 555	69,1	68,5	69,7	69,7	Daily intake
Суточные потребности			2 212	2 212	76,0	76,0	74,0	74,0	Daily needs
Баланс: (+) или (-)			414	343	-7	-7	-4	-4	Balance: (+) or (-)

Таблица 4: (продолжение)
Table 4: (continued)

Область/Oblast	Население, человек		Ккал в день на душу населения		Белки в день на душу населения, грамм		Жиры в день на душу населения, грамм		
	Number, people		K/Calories C/d/p		Proteins g/d/p		Fats g/d/p		
	I квартал / I quarter		I квартал / I quarter		I квартал / I quarter		I квартал / I quarter		
	2010	2011	2010	2011	2010	2011	2010	2011	
Дети 1-17	1 988 573	1 961 485							Children aged 1-17 years
Баткенская область	173 500	161 752	2 000	2 132	48,7	52,7	58,9	63,8	Batken oblast
Джалал-Абадская область	394 158	381 934	2 194	2 121	58,2	57,7	52,3	55,2	Djalal-Abad oblast
Иссык-Кульская область	155 384	157 374	1 971	1 888	49,6	50,4	51,0	50,5	Issyk-Kul oblast
Нарынская область	103 859	107 589	1 972	1 812	51,2	50,9	48,2	44,3	Naryn oblast
Ошская область	564 992	564 655	1 971	2 047	50,2	53,4	51,9	54,4	Osh oblast
Таласская область	95 399	94 248	2 083	2 092	52,7	57,3	53,6	51,0	Talas oblast
Чуйская область	250 455	245 895	2 109	2 111	54,6	55,4	57,2	56,7	Chui oblast
г.Бишкек	250 827	248 038	2 122	1 934	57,9	53,1	56,0	52,0	Bishkek city
Суточное потребление			2 060	2 039	53,3	54,2	53,6	54,3	Daily intake
Суточные потребности			1 920	1 920	69,0	69,0	66,0	66,0	Daily needs
Баланс: (+) или (-)			140	119	-16	-15	-12	-12	Balance: (+) or (-)

Таблица 4: (продолжение)
Table 4: (continued)

Область/Oblast	Население, человек		Ккал в день на душу населения		Белки в день на душу населения, грамм		Жиры в день на душу населения, грамм		
	Number, people		K/Calories C/d/p		Proteins g/d/p		Fats g/d/p		
	I квартал / I quarter		I квартал / I quarter		I квартал / I quarter		I квартал / I quarter		
	2010	2011	2010	2011	2010	2011	2010	2011	
Дети 1-3 лет	335 138	305 943							Children aged 1-3 years
Баткенская область	30 789	27 516	1 315	1 499	33,6	37,0	38,1	45,7	Batken oblast
Джалал-Абадская область	64 093	56 419	1 343	1 307	35,1	35,0	31,8	33,7	Djalal-Abad oblast
Иссык-Кульская область	37 297	29 827	1 318	1 268	33,2	35,1	32,8	32,7	Issyk-Kul oblast
Нарынская область	16 225	19 419	1 368	1 209	38,7	34,3	33,8	30,9	Naryn oblast
Ошская область	85 227	84 643	1 261	1 412	32,7	37,6	31,7	36,9	Osh oblast
Таласская область	16 265	17 345	1 495	1 421	37,8	38,6	40,1	35,1	Talas oblast
Чуйская область	49 496	32 087	1 507	1 379	39,2	37,2	39,2	35,9	Chui oblast
г.Бишкек	35 747	38 687	1 447	1 305	40,0	36,5	37,8	34,1	Bishkek city
Суточное потребление			1 361	1 357	35,6	36,5	34,7	35,7	Daily intake
Суточные потребности			1 661	1 661	62,0	62,0	59,0	59,0	Daily needs
Баланс: (+) или (-)			-300	-304	-26	-26	-24	-23	Balance: (+) or (-)

Таблица 4: (продолжение)
Table 4: (continued)

Область/Oblast	Население, человек		Ккал в день на душу населения		Белки в день на душу населения, грамм		Жиры в день на душу населения, грамм		
	Number, people		K/Calories C/d/p		Proteins g/d/p		Fats g/d/p		
	I квартал / I quarter		I квартал / I quarter		I квартал / I quarter		I квартал / I quarter		
	2010	2011	2010	2011	2010	2011	2010	2011	
Дети 4-6 лет	302 368	303 237							Children aged 4-6 years
Баткенская область	25 912	26 562	1 655	1 812	42,7	44,4	46,4	55,1	Batken oblast
Джалал-Абадская область	50 711	53 793	1 910	1 837	50,9	50,3	47,4	49,4	Djalal-Abad oblast
Иссык-Кульская область	22 718	25 611	1 760	1 620	44,3	43,4	46,2	43,0	Issyk-Kul oblast
Нарынская область	18 618	17 712	1 698	1 554	44,4	42,1	41,7	37,1	Naryn oblast
Ошская область	81 018	68 714	1 645	1 701	42,0	44,8	41,4	43,3	Osh oblast
Таласская область	18 244	16 477	1 789	1 753	44,4	48,5	45,3	43,3	Talas oblast
Чуйская область	37 499	49 471	1 804	1 774	47,2	46,5	49,4	48,8	Chui oblast
г.Бишкек	47 649	44 898	1 842	1 691	50,9	46,3	49,6	47,2	Bishkek city
Суточное потребление			1 762	1 733	46,1	46,2	45,7	46,5	Daily intake
Суточные потребности			1 661	1 661	62,0	62,0	59,0	59,0	Daily needs
Баланс: (+) или (-)			101	72	-16	-16	-13	-13	Balance: (+) or (-)

Таблица 4: (продолжение)

Table 4: (continued)

Область/Oblast	Население, человек		Ккал в день на душу населения		Белки в день на душу населения, грамм		Жиры в день на душу населения, грамм		
	Number, people		K/Calories C/d/p		Proteins g/d/p		Fats g/d/p		
	I квартал / I quarter		I квартал / I quarter		I квартал / I quarter		I квартал / I quarter		
	2010	2011	2010	2011	2010	2011	2010	2011	
Дети 7-13 лет	816 420	797 600							Children aged 7-13 years
Баткенская область	69 701	66 370	2 138	2 223	51,9	55,2	62,0	66,2	Batken oblast
Джалал-Абадская область	177 220	157 274	2 362	2 244	62,6	60,6	56,2	58,2	Djalal-Abad oblast
Иссык-Кульская область	53 374	61 141	2 144	2 054	53,7	54,6	53,9	55,1	Issyk-Kul oblast
Нарынская область	41 646	44 005	2 088	1 953	53,6	54,7	50,6	47,8	Naryn oblast
Ошская область	246 698	235 786	2 099	2 116	53,4	55,5	56,3	56,5	Osh oblast
Таласская область	35 594	35 962	2 160	2 279	55,0	63,0	54,3	55,2	Talas oblast
Чуйская область	93 255	96 258	2 194	2 306	57,8	61,3	60,1	60,5	Chui oblast
г.Бишкек	98 932	100 804	2 186	2 019	59,8	55,0	57,4	54,5	Bishkek city
Суточное потребление			2 186	2 154	56,6	57,3	56,8	57,2	Daily intake
Суточные потребности			2 031	2 031	73,0	73,0	70,0	70,0	Daily needs
Баланс: (+) или (-)			155	123	-16	-16	-13	-13	Balance: (+) or (-)

Таблица 4: (продолжение)
Table 4: (continued)

Область/Oblast	Население, человек		Ккал в день на душу населения		Белки в день на душу населения, грамм		Жиры в день на душу населения, грамм		
	Number, people		K/Calories C/d/p		Proteins g/d/p		Fats g/d/p		
	I квартал / I quarter		I квартал / I quarter		I квартал / I quarter		I квартал / I quarter		
	2010	2011	2010	2011	2010	2011	2010	2011	
Дети 14-17 лет	534 646	554 705							Children aged 14-17 years
Баткенская область	47 099	41 303	2 432	2 612	57,2	64,3	74,8	77,7	Batken oblast
Джалал-Абадская область	102 134	114 447	2 579	2 487	68,5	68,5	60,7	64,5	Djalal-Abad oblast
Иссык-Кульская область	41 995	40 795	2 447	2 260	61,9	59,9	66,0	61,3	Issyk-Kul oblast
Нарынская область	27 370	26 453	2 339	2 193	59,6	62,5	57,7	53,0	Naryn oblast
Ошская область	152 048	175 512	2 334	2 395	59,1	61,7	61,8	64,3	Osh oblast
Таласская область	25 296	24 464	2 566	2 521	65,0	68,1	67,2	61,2	Talas oblast
Чуйская область	70 204	68 079	2 584	2 426	65,2	62,1	70,3	66,8	Chui oblast
г.Бишкек	68 500	63 649	2 577	2 355	69,4	65,1	68,0	62,4	Bishkek city
Суточное потребление			2 473	2 415	63,4	63,9	65,1	64,5	Daily intake
Суточные потребности			2 244	2 244	78,0	78,0	74,0	74,0	Daily needs
Баланс: (+) или (-)			229	171	-15	-14	-9	-9	Balance: (+) or (-)

**Таблица 5: Баланс питания в виде энергетической ценности по результатам обследований
ежедневного потребления и оценки ежедневных потребностей**

(все население по квинтильным группам и регионам)

**Table 5: Food Balance expressed in nutritional values and compared to calculated daily needs, based on surveys of daily intake
and on calculated daily needs based on recurrent nutritional surveillance**

(total population by quintile groups and by regions)

	Население, человек		Ккал в день на душу населения		Белки в день на душу населения, грамм		Жиры в день на душу населения, грамм		
	Number, people		K/Calories C/d/p		Proteins g/d/p		Fats g/d/p		
	I квартал / I quarter		I квартал / I quarter		I квартал / I quarter		I квартал / I quarter		
	2010	2011	2010	2011	2010	2011	2010	2011	
Первая квинтиль	1 082 324	1 095 918							First quintile
Баткенская область	78 030	109 858	1 820	2 111	44,5	52,6	47,5	59,1	Batken oblast
Джалал-Абадская область	302 082	278 731	2 125	2 146	56,7	60,4	52,8	57,7	Djalal-Abad oblast
Иссык-Кульская область	111 401	110 876	1 859	1 853	48,6	49,4	43,7	49,1	Issyk-Kul oblast
Нарынская область	143 342	124 851	1 998	1 865	51,2	51,3	48,8	43,9	Naryn oblast
Ошская область	273 940	224 059	1 615	2 032	42,7	53,0	36,3	50,3	Osh oblast
Таласская область	71 551	88 406	1 982	1 987	48,4	53,8	51,6	47,4	Talas oblast
Чуйская область	95 988	154 572	1 867	2 049	46,8	52,4	45,7	49,6	Chui oblast
г.Бишкек	5 990	4 565	1 905	1 374	57,2	33,5	22,3	41,1	Bishkek city
Суточное потребление			1 896	2 028	49,3	54,2	45,9	51,9	Daily intake
Суточные потребности			2 101	2 101	73,0	73,0	71,0	71,0	Daily needs
Баланс: (+) или (-)			-205	-73	-24	-19	-25	-19	Balance: (+) or (-)

Таблица 5: (продолжение)

Table 5: (continued)

	Население, человек		Ккал в день на душу населения		Белки в день на душу населения, грамм		Жиры в день на душу населения, грамм		
	Number, people		K/Calories C/d/p		Proteins g/d/p		Fats g/d/p		
	I квартал / I quarter		I квартал / I quarter		I квартал / I quarter		I квартал / I quarter		
	2010	2011	2010	2011	2010	2011	2010	2011	
Вторая квинтиль	1 082 952	1 107 738							Second quintile
Баткенская область	125 254	104 426	2 174	2 258	54,2	56,2	62,6	68,3	Batken oblast
Джалал-Абадская область	305 773	299 017	2 484	2 301	68,0	63,3	59,4	59,1	Djalal-Abad oblast
Иссык-Кульская область	125 322	105 348	2 175	2 082	53,2	55,6	52,2	54,0	Issyk-Kul oblast
Нарынская область	40 390	35 549	2 193	2 078	56,7	58,2	51,7	52,8	Naryn oblast
Ошская область	296 335	336 497	1 931	2 004	49,8	53,4	46,5	52,3	Osh oblast
Таласская область	70 557	60 424	2 227	2 432	56,5	67,2	54,5	59,7	Talas oblast
Чуйская область	106 218	135 292	2 168	2 414	54,5	65,0	60,0	62,0	Chui oblast
г.Бишкек	13 104	31 183	1 941	1 657	55,1	43,5	39,7	42,7	Bishkek city
Суточное потребление			2 196	2 182	57,0	58,6	54,6	57,1	Daily intake
Суточные потребности			2 101	2 101	73,0	73,0	71,0	71,0	Daily needs
Баланс: (+) или (-)			95	81	-16	-14	-16	-14	Balance: (+) or (-)

Таблица 5: (продолжение)
Table 5: (continued)

	Население, человек		Ккал в день на душу населения		Белки в день на душу населения, грамм		Жиры в день на душу населения, грамм		
	Number, people		K/Calories C/d/p		Proteins g/d/p		Fats g/d/p		
	I квартал / I quarter		I квартал / I quarter		I квартал / I quarter		I квартал / I quarter		
	2010	2011	2010	2011	2010	2011	2010	2011	
Третья квинтиль	1 088 396	1 083 405							Third quintile
Баткенская область	88 146	90 365	2 363	2 204	58,0	53,3	71,5	67,1	Batken oblast
Джалал-Абадская область	245 075	227 329	2 559	2 434	66,0	64,4	59,3	62,8	Djalal-Abad oblast
Иссык-Кульская область	102 577	83 626	2 370	2 216	60,6	59,7	62,3	60,0	Issyk-Kul oblast
Нарынская область	27 533	37 505	2 151	1 991	57,7	55,8	51,2	48,3	Naryn oblast
Ошская область	292 198	297 035	2 197	2 165	55,4	58,4	60,4	57,0	Osh oblast
Таласская область	43 483	36 765	2 754	2 638	70,0	70,8	72,4	66,6	Talas oblast
Чуйская область	185 590	172 563	2 451	2 427	65,4	63,6	64,3	65,1	Chui oblast
г.Бишкек	103 794	138 216	1 999	1 915	54,2	51,3	50,1	48,8	Bishkek city
Суточное потребление			2 354	2 248	60,7	59,6	61,2	59,6	Daily intake
Суточные потребности			2 101	2 101	73,0	73,0	71,0	71,0	Daily needs
Баланс: (+) или (-)			253	147	-12	-13	-10	-11	Balance: (+)or (-)

Таблица 5: (продолжение)
Table 5: (continued)

	Население, человек		Ккал в день на душу населения		Белки в день на душу населения, грамм		Жиры в день на душу населения, грамм		
	Number, people		K/Calories C/d/p		Proteins g/d/p		Fats g/d/p		
	I квартал / I quarter		I квартал / I quarter		I квартал / I quarter		I квартал / I quarter		
	2010	2011	2010	2011	2010	2011	2010	2011	
Четвертая квинтиль	1 081 320	1 095 331							Fourth quintile
Баткенская область	77 192	76 907	2 476	2 672	64,1	65,8	76,3	83,0	Batken oblast
Джалал-Абадская область	120 270	163 273	2 724	2 432	71,3	64,7	69,9	64,5	Djalal-Abad oblast
Иссык-Кульская область	60 798	76 680	2 793	2 497	71,2	65,3	74,2	70,0	Issyk-Kul oblast
Нарынская область	25 277	33 099	2 273	2 187	61,4	65,1	53,4	56,9	Naryn oblast
Ошская область	287 930	290 003	2 348	2 455	59,8	64,1	63,9	66,3	Osh oblast
Таласская область	29 136	28 842	3 080	3 131	78,9	85,9	85,7	80,8	Talas oblast
Чуйская область	203 788	180 036	2 652	2 641	71,3	71,8	77,9	74,6	Chui oblast
г.Бишкек	276 928	246 490	2 245	2 117	61,2	58,2	58,6	56,1	Bishkek city
Суточное потребление			2 473	2 434	65,1	64,9	67,6	66,6	Daily intake
Суточные потребности			2 101	2 101	73,0	73,0	71,0	71,0	Daily needs
Баланс: (+) или (-)			372	333	-8	-8	-3	-4	Balance: (+) or (-)

Таблица 5: (продолжение)
Table 5: (continued)

	Население, человек		Ккал в день на душу населения		Белки в день на душу населения, грамм		Жиры в день на душу населения, грамм		
	Number, people		K/Calories C/d/p		Proteins g/d/p		Fats g/d/p		
	I квартал / I quarter		I квартал / I quarter		I квартал / I quarter		I квартал / I quarter		
	2010	2011	2010	2011	2010	2011	2010	2011	
Пятая квинтиль	1 083 308	1 095 229							Fifth quintile
Баткенская область	65 180	59 545	2 589	2 859	62,0	72,3	84,8	87,5	Batken oblast
Джалал-Абадская область	49 932	68 294	3 586	3 241	99,4	86,4	95,8	89,6	Djalal-Abad oblast
Иссык-Кульская область	41 225	67 990	3 456	3 187	88,0	87,8	109,2	92,7	Issyk-Kul oblast
Нарынская область	22 836	31 132	2 518	2 400	69,6	71,7	66,8	69,7	Naryn oblast
Ошская область	226 555	239 139	2 856	2 554	72,1	65,0	81,8	74,7	Osh oblast
Таласская область	14 268	17 381	3 866	3 988	103,2	113,1	113,4	102,5	Talas oblast
Чуйская область	216 662	172 406	3 225	3 206	87,1	86,3	97,4	104,9	Chui oblast
г.Бишкек	446 651	439 341	2 864	2 616	80,9	73,5	83,5	77,2	Bishkek city
Суточное потребление			2 980	2 798	80,3	75,9	87,6	83,5	Daily intake
Суточные потребности			2 101	2 101	73,0	73,0	71,0	71,0	Daily needs
Баланс: (+) или (-)			879	697	7	3	17	13	Balance: (+) or (-)

Таблица 6: Продовольственный баланс домохозяйств в стоимостном выражении по результатам обследований уровня жизни

(все население по доходным квинтильным группам и регионам, сомов)

Table 6: Household Food Balance expressed in value terms based on results of surveys of living standard

(total population by income quintile groups and by regions, som)

	Население, человек		Среднедушевые доходы, сом/чел/месяц		Среднедушевые расходы на питание, сом/чел/месяц		Баланс, %		
	Number, people		Average per capita available income, s/ps/month		Average per capita food expenditure, s/ps/month		Balance, %		
	I квартал / I quarter		I квартал / I quarter		I квартал / I quarter		I квартал / I quarter		
	2010	2011	2010	2011	2010	2011	2010	2011	
Все население	5418299	5 477 620							Total population
Баткенская область	433802	441 101	1 977,0	2 591,3	784,0	940,9	39,7	36,3	Batken oblast
Джалал-Абадская область	1023132	1 036 644	2 027,2	2 071,4	797,1	1 019,7	39,3	49,2	Djalal-Abad oblast
Иссык-Кульская область	441323	444 520	1 947,8	3 117,0	847,1	1 194,5	43,5	38,3	Issyk-Kul oblast
Нарынская область	259378	262 137	1 689,4	1 980,1	471,3	777,1	27,9	39,2	Naryn oblast
Ошская область	1376957	1 386 734	2 066,8	2 452,3	1 019,5	1 230,3	49,3	50,2	Osh oblast
Таласская область	228995	231 819	1 826,7	2 127,3	767,4	950,7	42,0	44,7	Talas oblast
Чуйская область	808245	814 870	2 603,7	2 708,2	1 219,0	1 334,9	46,8	49,3	Chui oblast
г.Бишкек	846467	859 795	2 996,7	3 212,8	1 537,9	1 782,1	51,3	55,5	Bishkek city
Средневзвешенный баланс			2 239,6	2 566,5	1 018,5	1 232,9	45,5	48,0	Average weighted balance

Таблица 6: (продолжение)
Table 6: (continued)

	Население, человек		Среднедушевые доходы, сом/чел/месяц		Среднедушевые расходы на питание, сом/чел/месяц		Баланс, %		
	Number, people		Average per capita available income, s/ps/month		Average per capita food expenditure, s/ps/month		Balance, %		
	I квартал / I quarter		I квартал / I quarter		I квартал / I quarter		I квартал / I quarter		
	2010	2011	2010	2011	2010	2011	2010	2011	
Первая квинтиль	1 056 276	1 095 602							First quintile
Баткенская область	96 649	68 415	689,8	892,9	570,2	789,3	82,7	88,4	Batken oblast
Джалал-Абадская область	189 499	286 894	687,3	738,4	588,2	730,1	85,6	98,9	Djalal-Abad oblast
Иссык-Кульская область	122 439	117 562	623,6	702,4	552,3	841,9	88,6	119,9	Issyk-Kul oblast
Нарынская область	121 428	104 126	662,5	713,3	290,3	581,0	43,8	81,4	Naryn oblast
Ошская область	298 750	236 372	672,9	832,2	747,4	831,2	111,1	99,9	Osh oblast
Таласская область	75 225	92 047	633,7	741,4	632,2	644,2	99,8	86,9	Talas oblast
Чуйская область	131 256	148 175	615,5	740,9	684,2	901,4	111,2	121,7	Chui oblast
г.Бишкек	21 030	42 012	667,2	946,3	870,8	1 268,7	130,5	134,1	Bishkek city
Средневзвешенный баланс			660,1	770,6	613,9	790,0	93,0	102,5	Average weighted balance

Таблица 6: (продолжение)
Table 6: (continued)

	Население, человек		Среднедушевые доходы, сом/чел/месяц		Среднедушевые расходы на питание, сом/чел/месяц		Баланс, %		
	Number, people		Average per capita available income, s/ps/month		Average per capita food expenditure, s/ps/month		Balance, %		
	I квартал / I quarter		I квартал / I quarter		I квартал / I quarter		I квартал / I quarter		
	2010	2011	2010	2011	2010	2011	2010	2011	
Вторая квинтиль	1 111 057	1 088 538							Second quintile
Баткенская область	98 641	83 100	1 249,4	1 472,3	695,5	742,7	55,7	50,4	Batken oblast
Джалал-Абадская область	266 567	195 667	1 218,4	1 492,2	650,8	849,8	53,4	57,0	Djalal-Abad oblast
Иссык-Кульская область	112 689	78 947	1 262,5	1 464,4	713,9	1 063,6	56,5	72,6	Issyk-Kul oblast
Нарынская область	37 575	48 247	1 238,2	1 409,4	404,5	834,4	32,7	59,2	Naryn oblast
Ошская область	333 071	369 760	1 188,1	1 470,8	818,8	1 167,8	68,9	79,4	Osh oblast
Таласская область	46 510	36 023	1 249,1	1 430,3	679,3	862,8	54,4	60,3	Talas oblast
Чуйская область	132 393	151 949	1 280,1	1 485,2	873,4	1 046,8	68,2	70,5	Chui oblast
г.Бишкек	83 611	124 846	1 262,5	1 500,5	1 100,5	1 470,6	87,2	98,0	Bishkek city
Средневзвешенный баланс			1 229,2	1 475,6	764,7	1 063,6	62,2	72,1	Average weighted balance

Таблица 6: (продолжение)
Table 6: (continued)

	Население, человек		Среднедушевые доходы, сом/чел/месяц		Среднедушевые расходы на питание, сом/чел/месяц		Баланс, %		
	Number, people		Average per capita available income, s/ps/month		Average per capita food expenditure, s/ps/month		Balance, %		
	I квартал / I quarter		I квартал / I quarter		I квартал / I quarter		I квартал / I quarter		
	2010	2011	2010	2011	2010	2011	2010	2011	
Третья квинтиль	1 083 316	1 099 019							Third quintile
Баткенская область	82 991	95 359	1 784,3	2 034,8	780,3	871,1	43,7	42,8	Batken oblast
Джалал-Абадская область	198 377	219 060	1 755,8	2 041,7	849,3	1 160,1	48,4	56,8	Djalal-Abad oblast
Иссык-Кульская область	83 465	65 637	1 795,2	1 988,1	1 010,2	1 210,4	56,3	60,9	Issyk-Kul oblast
Нарынская область	30 560	38 572	1 831,6	2 102,5	484,4	672,9	26,4	32,0	Naryn oblast
Ошская область	251 619	323 272	1 816,4	2 048,9	1 016,6	1 185,1	56,0	57,8	Osh oblast
Таласская область	50 991	31 104	1 792,2	2 068,3	719,3	1 183,5	40,1	57,2	Talas oblast
Чуйская область	170 891	158 347	1 794,5	2 034,7	1 015,7	1 302,3	56,6	64,0	Chui oblast
г.Бишкек	214 421	167 668	1 821,6	2 078,4	1 347,1	1 506,6	74,0	72,5	Bishkek city
Средневзвешенный баланс			1 798,1	2 047,5	1 003,6	1 202,3	55,8	58,7	Average weighted balance

Таблица 6: (продолжение)
Table 6: (continued)

	Население, человек		Среднедушевые доходы, сом/чел/месяц		Среднедушевые расходы на питание, сом/чел/месяц		Баланс, %		
	Number, people		Average per capita available income, s/ps/month		Average per capita food expenditure, s/ps/month		Balance, %		
	I квартал / I quarter		I квартал / I quarter		I квартал / I quarter		I квартал / I quarter		
	2010	2011	2010	2011	2010	2011	2010	2011	
Четвертая квинтиль	1 083 998	1 099 218							Fourth quintile
Баткенская область	80 679	103 038	2 499,4	2 815,1	999,3	1 004,0	40,0	35,7	Batken oblast
Джалал-Абадская область	244 064	219 056	2 561,2	2 786,8	910,6	1 157,5	35,6	41,5	Djalal-Abad oblast
Иссык-Кульская область	59 468	75 187	2 500,2	2 948,3	1 002,4	1 292,1	40,1	43,8	Issyk-Kul oblast
Нарынская область	42 137	32 411	2 589,2	2 978,7	740,5	971,1	28,6	32,6	Naryn oblast
Ошская область	247 486	220 135	2 559,5	2 894,0	1 095,7	1 479,3	42,8	51,1	Osh oblast
Таласская область	30 108	37 542	2 540,8	2 802,2	1 200,2	1 310,1	47,2	46,8	Talas oblast
Чуйская область	155 594	186 531	2 562,2	2 838,6	1 384,1	1 438,1	54,0	50,7	Chui oblast
г.Бишкек	224 463	225 317	2 592,0	2 886,2	1 384,1	1 649,6	53,4	57,2	Bishkek city
Средневзвешенный баланс			2 559,9	2 857,3	1 131,9	1 365,0	44,2	47,8	Average weighted balance

Таблица 6: (продолжение)
Table 6: (continued)

	Население, человек		Среднедушевые доходы, сом/чел/месяц		Среднедушевые расходы на питание, сом/чел/месяц		Баланс, %		
	Number, people		Average per capita available income, s/ps/month		Average per capita food expenditure, s/ps/month		Balance, %		
	I квартал / I quarter		I квартал / I quarter		I квартал / I quarter		I квартал / I quarter		
	2010	2011	2010	2011	2010	2011	2010	2011	
Пятая квинтиль	1 083 652	1 095 243							Fifth quintil
Баткенская область	74 842	91 190	4 248,5	5 214,5	948,7	1 237,0	22,3	23,7	Batken oblast
Джалал-Абадская область	124 624	115 967	5 181,1	5 051,5	1 122,6	1 497,0	21,7	29,6	Djalal-Abad oblast
Иссык-Кульская область	63 262	107 187	5 413,8	7 792,2	1 293,6	1 599,3	23,9	20,5	Issyk-Kul oblast
Нарынская область	27 678	38 781	5 280,2	5 135,2	931,5	1 173,9	17,6	22,9	Naryn oblast
Ошская область	246 031	237 196	4 709,4	5 736,7	1 548,0	1 556,1	32,9	27,1	Osh oblast
Таласская область	26 161	35 103	5 529,1	5 807,0	908,7	1 254,0	16,4	21,6	Talas oblast
Чуйская область	218 112	169 867	5 267,1	6 003,1	1 792,1	1 888,0	34,0	31,5	Chui oblast
г.Бишкек	302 942	299 953	4 768,6	5 122,4	1 954,0	2 237,1	41,0	43,7	Bishkek city
Средневзвешенный баланс			4 936,1	5 675,9	1 574,3	1 742,3	31,9	30,7	Average weighted balance

Таблица 7: Продовольственный баланс домохозяйств в стоимостном выражении по результатам обследований уровня жизни

(все население по расходным квинтильным группам и регионам, сомов)

Table 7: Household Food Balance expressed in value terms based on results of surveys of living standard

(total population by expenditure quintile groups and by regions, som)

	Население, человек		Общие среднедушевые расходы, сом/чел/месяц		Среднедушевые расходы на питание, сом/чел/месяц		Баланс, %		
	Number, people		Total per capita expenditures s/ps/month		Average per capita food expenditure, s/ps/month		Balance, %		
	I квартал / I quarter		I квартал / I quarter		I квартал / I quarter		I квартал / I quarter		
	2010	2011	2010	2011	2010	2011	2010	2011	
Все население	5 418 299	5 477 620							Total population
Баткенская область	433 802	441 101	1 949,3	2 111,2	784,0	940,9	40,2	44,6	Batken oblast
Джалал-Абадская область	1 023 132	1 036 644	1 485,1	1 841,9	797,1	1 019,7	53,7	55,4	Djalal-Abad oblast
Иссык-Кульская область	441 323	444 520	1 730,4	2 241,9	847,1	1 194,5	49,0	53,3	Issyk-Kul oblast
Нарынская область	259 378	262 137	1 408,3	1 893,1	471,3	777,1	33,5	41,0	Naryn oblast
Ошская область	1 376 957	1 386 734	2 062,4	2 496,8	1 019,5	1 230,3	49,4	49,3	Osh oblast
Таласская область	228 995	231 819	1 537,1	1 834,5	767,4	950,7	49,9	51,8	Talas oblast
Чуйская область	808 245	814 870	2 578,2	2 664,8	1 219,0	1 334,9	47,3	50,1	Chui oblast
г.Бишкек	846 467	859 795	3 707,7	3 795,3	1 537,9	1 782,1	41,5	47,0	Bishkek city
Средневзвешенный баланс			2 197,8	2 493,0	1 018,5	1 232,9	46,3	49,5	Average weighted balance

Таблица 7: (продолжение)

Table 7: (continued)

	Население, человек		Общие среднедушевые расходы, сом/чел/месяц		Среднедушевые расходы на питание, сом/чел/месяц		Баланс, %		
	Number, people		Total per capita expenditures s/ps/month		Average per capita food expenditure, s/ps/month		Balance, %		
	I квартал / I quarter		I квартал / I quarter		I квартал / I quarter		I квартал / I quarter		
	2010	2011	2010	2011	2010	2011	2010	2011	
Первая квинтиль	1 082 324	1 095 918							First quintile
Баткенская область	78 030	109 858	776,3	913,3	388,3	481,1	50,0	52,7	Batken oblast
Джалал-Абадская область	302 082	278 731	760,8	913,9	389,9	498,5	51,3	54,5	Djalal-Abad oblast
Иссык-Кульская область	111 401	110 876	788,2	932,9	423,5	515,5	53,7	55,3	Issyk-Kul oblast
Нарынская область	143 342	124 851	642,8	835,0	230,7	400,1	35,9	47,9	Naryn oblast
Ошская область	273 940	224 059	802,7	874,6	530,6	521,5	66,1	59,6	Osh oblast
Таласская область	71 551	88 406	766,1	919,4	398,2	477,2	52,0	51,9	Talas oblast
Чуйская область	95 988	154 572	727,6	947,6	415,7	536,0	57,1	56,6	Chui oblast
г.Бишкек	5 990	4 565	722,5	997,6	290,7	561,1	40,2	56,2	Bishkek city
Средневзвешенный баланс			756,9	904,3	410,0	495,8	54,2	54,8	Average weighted balance

Таблица 7: (продолжение)

Table 7: (continued)

	Население, человек		Общие среднедушевые расходы, сом/чел/месяц		Среднедушевые расходы на питание, сом/чел/месяц		Баланс, %		
	Number, people		Total per capita expenditures s/ps/month		Average per capita food expenditure, s/ps/month		Balance, %		
	I квартал / I quarter		I квартал / I quarter		I квартал / I quarter		I квартал / I quarter		
	2010	2011	2010	2011	2010	2011	2010	2011	
Вторая квинтиль	1 082 952	1 107 738							Second quintile
Баткенская область	125 254	104 426	1 258,7	1 489,0	576,5	721,5	45,8	48,5	Batken oblast
Джалал-Абадская область	305 773	299 017	1 241,9	1 458,6	714,6	827,4	57,5	56,7	Djalal-Abad oblast
Иссык-Кульская область	125 322	105 348	1 190,2	1 497,3	579,4	874,4	48,7	58,4	Issyk-Kul oblast
Нарынская область	40 390	35 549	1 242,0	1 519,9	497,1	766,7	40,0	50,4	Naryn oblast
Ошская область	296 335	336 497	1 244,4	1 562,2	715,1	957,0	57,5	61,3	Osh oblast
Таласская область	70 557	60 424	1 227,9	1 517,0	629,6	900,8	51,3	59,4	Talas oblast
Чуйская область	106 218	135 292	1 283,0	1 536,9	690,1	848,1	53,8	55,2	Chui oblast
г.Бишкек	13 104	31 183	1 309,3	1 562,6	580,8	812,9	44,4	52,0	Bishkek city
Средневзвешенный баланс			1 242,5	1 514,2	665,5	865,4	53,6	57,2	Average weighted balance

Таблица 7: (продолжение)

Table 7: (continued)

	Население, человек		Общие среднедушевые расходы, сом/чел/месяц		Среднедушевые расходы на питание, сом/чел/месяц		Баланс, %		
	Number, people		Total per capita expenditures s/ps/month		Average per capita food expenditure, s/ps/month		Balance, %		
	I квартал / I quarter		I квартал / I quarter		I квартал / I quarter		I квартал / I quarter		
	2010	2011	2010	2011	2010	2011	2010	2011	
Третья квинтиль	1 088 396	1 083 405							Third quintile
Баткенская область	88 146	90 365	1 747,1	2 039,0	859,8	959,0	49,2	47,0	Batken oblast
Джалал-Абадская область	245 075	227 329	1 696,9	2 058,7	934,0	1 146,6	55,0	55,7	Djalal-Abad oblast
Иссык-Кульская область	102 577	83 626	1 716,2	2 072,6	928,8	1 200,6	54,1	57,9	Issyk-Kul oblast
Нарынская область	27 533	37 505	1 746,9	2 037,1	531,6	949,3	30,4	46,6	Naryn oblast
Ошская область	292 198	297 035	1 790,6	2 061,3	1 000,1	1 165,0	55,9	56,5	Osh oblast
Таласская область	43 483	36 765	1 725,1	2 067,8	977,5	1 220,5	56,7	59,0	Talas oblast
Чуйская область	185 590	172 563	1 786,1	2 089,5	968,4	1 206,0	54,2	57,7	Chui oblast
г.Бишкек	103 794	138 216	1 824,6	2 094,8	844,0	1 042,0	46,3	49,7	Bishkek city
Средневзвешенный баланс			1 757,7	2 067,9	934,1	1 132,0	53,1	54,7	Average weighted balance

Таблица 7: (продолжение)
Table 7: (continued)

	Население, человек		Общие среднедушевые расходы, сом/чел/месяц		Среднедушевые расходы на питание, сом/чел/месяц		Баланс, %		
	Number, people		Total per capita expenditures s/ps/month		Average per capita food expenditure, s/ps/month		Balance, %		
	I квартал / I quarter		I квартал / I quarter		I квартал / I quarter		I квартал / I quarter		
	2010	2011	2010	2011	2010	2011	2010	2011	
Четвертая квинтиль	1 081 320	1 095 331							Fourth quintile
Баткенская область	77 192	76 907	2 394,8	2 720,7	958,7	1 165,5	40,0	42,8	Batken oblast
Джалал-Абадская область	120 270	163 273	2 450,3	2 782,6	1 274,4	1 572,4	52,0	56,5	Djalal-Abad oblast
Иссык-Кульская область	60 798	76 680	2 523,3	2 837,7	1 271,4	1 475,3	50,4	52,0	Issyk-Kul oblast
Нарынская область	25 277	33 099	2 557,7	2 868,5	1 049,3	1 150,4	41,0	40,1	Naryn oblast
Ошская область	287 930	290 003	2 472,3	2 802,5	1 189,1	1 505,8	48,1	53,7	Osh oblast
Таласская область	29 136	28 842	2 511,4	2 782,6	1 334,4	1 488,5	53,1	53,5	Talas oblast
Чуйская область	203 788	180 036	2 473,0	2 807,4	1 239,5	1 559,4	50,1	55,5	Chui oblast
г.Бишкек	276 928	246 490	2 580,9	2 853,5	1 112,0	1 415,2	43,1	49,6	Bishkek city
Средневзвешенный баланс			2 498,2	2 810,0	1 177,2	1 466,9	47,1	52,2	Average weighted balance

Таблица 7: (продолжение)

Table 7: (continued)

	Население, человек		Общие среднедушевые расходы, сом/чел/месяц		Среднедушевые расходы на питание, сом/чел/месяц		Баланс, %		
	Number, people		Total per capita expenditures s/ps/month		Average per capita food expenditure, s/ps/month		Balance, %		
	I квартал / I quarter		I квартал / I quarter		I квартал / I quarter		I квартал / I quarter		
	2010	2011	2010	2011	2010	2011	2010	2011	
Пятая квинтиль	1 083 308	1 095 229							Fifth quintile
Баткенская область	65 180	59 545	4 426,7	4 734,8	1 347,1	1 856,4	30,4	39,2	Batken oblast
Джалал-Абадская область	49 932	68 294	3 991,9	4 336,6	1 944,3	2 244,4	48,7	51,8	Djalal-Abad oblast
Иссык-Кульская область	41 225	67 990	4 784,7	5 066,6	1 976,5	2 473,4	41,3	48,8	Issyk-Kul oblast
Нарынская область	22 836	31 132	4 827,0	5 352,1	1 223,1	1 696,5	25,3	31,7	Naryn oblast
Ошская область	226 555	239 139	4 485,2	5 502,0	1 818,4	2 026,0	40,5	36,8	Osh oblast
Таласская область	14 268	17 381	4 369,4	5 526,5	1 502,5	2 069,6	34,4	37,4	Talas oblast
Чуйская область	216 662	172 406	4 810,4	5 516,3	2 029,6	2 327,8	42,2	42,2	Chui oblast
г.Бишкек	446 651	439 341	4 954,4	5 046,2	2 008,1	2 302,2	40,5	45,6	Bishkek city
Средневзвешенный баланс			4 734,5	5 176,1	1 905,6	2 207,8	40,2	42,7	Average weighted balance

10. Индикаторы для целей развития тысячелетия

10. MDG Indicators

Таблица 10.1.: Заболеваемость туберкулезом

(на 100 тыс. населения)

Table 10.1.: Tuberculosis morbidity (Prevalence rate associated to tuberculosis)

(per 100000 population)

	2005	2006	2007	2008	2009	2010	
Кыргызская Республика	125,7	121,9	115,5	106,3	103,9	101,1	Kyrgyz Republic
Баткенская область	86,3	84,2	80,3	81,7	82,7	81,8	Batken oblast
Джалал-Абадская область	112,1	101,9	91,9	88,3	87,8	85,9	Djalal-Abad oblast
Иссык-Кульская область	70,2	66,6	74,8	65,7	68,3	67,3	Issyk-Kul oblast
Нарынская область	92,0	101,2	89,1	101,2	97,2	103,9	Naryn oblast
Ошская область	100,2	97,3	102,9	97,9	99,5	90,3	Osh oblast
Таласская область	112,3	110,8	109,8	98,9	98,8	105,9	Talas oblast
Чуйская область	220,8	209,0	158,5	166,8	155,2	154,5	Chui oblast
г. Бишкек	146,1	157,9	174,4	123,1	114,5	113,1	Bishkek city
г.Ош	140,1	115,6	103,3	99,5	99,8	85,4	Osh city

Таблица 10.2.: Заболеваемость бруцеллезом

(на 100 тыс. населения)

Table 10.2.: Brucellosis morbidity

(per 100000 population)

	2005	2006	2007	2008	2009	2010	
Кыргызская Республика	55,9	74,4	77,5	73,0	67,4	73,0	Kyrgyz Republic
Баткенская область	163,0	113,2	93,5	86,1	66,0	83,9	Batken oblast
Джалал-Абадская область	66,1	88,3	96,8	111,5	112,9	128,5	Djalal-Abad oblast
Иссык-Кульская область	65,3	112,0	143,6	136,7	125,1	134,6	Issyk-Kul oblast
Нарынская область	118,3	164,3	180,1	162,6	168,8	86,3	Naryn oblast
Ошская область	21,9	62,2	64,4	43,1	40,7	41,2	Osh oblast
Таласская область	125,9	149,4	135,1	132,7	110,7	141,5	Talas oblast
Чуйская область	48,9	67,7	57,9	52,2	45,8	55,0	Chui oblast
г. Бишкек	7,9	7,1	10,6	12,8	11,2	24,0	Bishkek city
г.Ош	12,0	23,2	32,0	29,2	17,8	10,1	Osh city

Таблица 10.3.: Заболеваемость железодефицитной анемией детей в возрасте 0-14 лет

(случаев)

Table 10.3.: Iron Deficit Anemia Morbidity of Children at the age of 0-14

(cases)

	Зарегистрировано больных - всего Registered patients - total						в том числе с диагнозом, установленным впервые в жизни including those with diagnosis determined for the first time in the life						
	2005 ¹	2006	2007	2008	2009	2010	2005 ¹	2006	2007	2008	2009	2010	
Кыргызская Республика	53790	56258	58289	54072	56124	59904	28490	33477	37121	35690	37252	39400	Kyrgyz Republic
Баткенская область	7087	9093	7581	6974	6699	8107	3866	5659	5051	4960	4392	4542	Batken oblast
Джалал-Абадская область	10819	9695	11731	10239	9626	9701	4612	5124	6578	6491	5464	6249	Djalal-Abad oblast
Иссык-Кульская область	3210	3082	2953	3108	3771	4117	1787	1958	2041	2443	2761	3418	Issyk-Kul oblast
Нарынская область	2119	2082	2515	2417	2588	2047	1032	1135	1556	1604	1666	1310	Naryn oblast
Ошская область	16669	18553	18670	16130	15545	17569	9218	10734	12786	10202	10283	10911	Osh oblast
Таласская область	1576	817	1165	970	782	1150	867	544	703	696	585	867	Talas oblast
Чуйская область	2845	3092	3439	3210	3726	3717	1871	2182	2606	2460	2939	2856	Chui oblast
г. Бишкек	6442	6760	7226	8185	8946	9960	3755	4360	4272	4995	5782	6941	Bishkek city
г.Ош	3023	3022	2917	2757	4417	3517	1482	1747	1479	1775	3380	2290	Osh city
Прочие медицинские учреждения республиканского подчинения ¹	–	62	92	82	24	19	–	34	49	64	–	16	Other medical institutions of republican subordination ¹

¹ За 2005г. - данные распределены по территории.

¹ For 2005 - data have been disseminated by territory.

**Таблица 10.4.: Заболеваемость населения железодефицитной анемией
в возрасте 15 лет и старше**
(случаев)

Table 10.4.: Iron Deficit Anemia Morbidity of the Population at the age of 15 and over
(cases)

	Зарегистрировано больных - всего Registered patients - total						в том числе с диагнозом, установленным впервые в жизни including those with diagnosis determined for the first time in the life						
	2005 ¹	2006	2007	2008	2009	2010	2005 ¹	2006	2007	2008	2009	2010	
Кыргызская Республика	102373	93966	98345	91305	88667	90703	44480	44375	47747	46034	45296	50756	Kyrgyz Republic
Баткенская область	16286	19041	19309	14640	14394	14722	9020	10298	10783	8577	7652	8406	Batken oblast
Джалал-Абадская область	19368	15516	17601	15507	15815	16388	7299	7602	9769	8396	7999	9064	Djalal-Abad oblast
Иссык-Кульская область	3767	3395	2952	3026	3039	2962	1753	1647	1363	1628	1937	1863	Issyk-Kul oblast
Нарынская область	4451	4281	4581	3629	4122	4032	1911	1750	2131	1679	2052	2556	Naryn oblast
Ошская область	37046	29974	31278	31932	27892	28534	14967	13763	13584	15693	14627	17247	Osh oblast
Таласская область	2677	2251	2245	2118	2557	2487	831	811	1131	1231	1484	1684	Talas oblast
Чуйская область	6739	6049	6190	5641	5453	5332	3842	2916	3785	3384	3108	3021	Chui oblast
г. Бишкек	7788	9360	10246	11493	11592	12487	2684	3065	3351	3909	4189	5156	Bishkek city
г.Ош	4251	4046	3854	3217	3748	3691	2173	2495	1805	1495	2202	1733	Osh city
Прочие медицинские учреждения республиканского подчинения ¹	–	53	89	102	55	68	–	28	45	42	46	26	Other medical institutions of republican subordination ¹

¹ За 2005г. - данные распределены по территории.

¹ For 2005 - data have been disseminated by territory.

**Таблица 8. Индикаторы продовольственной безопасности
Кыргызской Республики**

Table 8. Food Security Indicators of the Kyrgyz Republic

Таблица 8.1. Уровень суточной энергетической ценности рациона человека

(ккал)

Table 8.1. Level of daily energy value of people diet

(k/Cal)

Период/Period	Фактическая ценность рациона ¹ /Actual dietary value ¹	Минимальная норма/Minimal ratio	Фактическое значение индикатора (гр. 2/гр.3)/Actual meaning of the indicator (paragraph 2/ paragraph 3)
1	2	3	4
Янв.-март /Jan-March 2007	2196	2431	0,90
янв.-июнь/Jan-June 2007	2184	2431	0,90
янв.-сент./Jan-Sept. 2007	2253	2431	0,93
2007	2218	2431	0,91
янв.-март/Jan-March 2008	2287	2431	0,94
янв.-июнь/Jan-June 2008	2277	2431	0,94
янв.-сент./Jan-Sept. 2008	2299	2431	0,95
2008	2295	2431	0,94
янв.-март/Jan-March 2009	2395	2431	0,99
янв.-июнь/Jan-June 2009	2348	2431	0,97
янв.-сент. /Jan-Sept. 2009	2356	2101	1,12
2009	2358	2101	1,12
янв.-март/Jan-March 2010	2380	2101	1,13
янв.-июнь/Jan-June 2010	2323	2101	1,11
янв.-сент./Jan-Sept. 2010	2305	2101	1,10
2010	2319	2101	1,10
янв.-март/Jan-March 2011	2338	2101	1,11

¹ По результатам интегрированного выборочного обследования бюджетов домашних хозяйств и рабочей силы./¹ According to results of the Integrated Sampling Survey of Household Budgets and Labour Force.

Таблица 8.2. Достаточность потребления отдельного продукта ²

(в среднем на душу населения, кг в месяц)

Table 8.2. Sufficiency of selected foods consumption ²

(average per capita, kg. per month)

	Фактическое потребление/Actual consumption								
	Хлеб и хлебо- продукты/ Bread and bread products	Мясо и мясопро- дукты/Me at and meat products	Молоко и молочные продукты/ Milk and dairy products	Яйца (штук)/ Eggs (pieces)	Овощи и бахчевые/ Vegetables and melons	Фрукты и ягоды/ Fruits and berries	Картофель/P otatoes	Сахар/ Sugar	Масло раститель- ное/ Vegetable oil
Янв.-март /Jan- March 2007	15,2	3,0	10,8	5,0	12,0	2,1	8,2	1,3	0,5
Янв.-июнь/Jan- June 2007	15,4	3,0	15,5	5,1	6,2	1,4	8,0	1,5	0,4
Янв.-сент./Jan- Sept. 2007	16,2	3,2	17,4	5,1	10,9	2,6	8,4	1,6	0,5
2007	15,3	2,9	17,4	5,9	12,2	3,0	8,0	1,8	0,5
Янв.-март/Jan- March 2008	15,3	3,0	10,9	5,2	12,2	2,1	8,2	1,4	0,5
Янв.-июнь/Jan- June 2008	15,4	3,0	15,7	5,2	6,2	1,2	8,0	1,6	0,5
Янв.-сент./Jan- Sept 2008	16,2	3,3	17,4	5,2	11,0	2,0	8,4	1,6	0,6
2008	15,9	3,1	18,1	6,3	12,6	2,5	8,3	1,8	0,6
Янв.-март/Jan- March 2009	16,1	3,2	12,2	5,9	12,7	0,9	8,3	1,7	0,9
Янв.-июнь/Jan- June 2009	16,0	3,1	16,5	5,5	6,6	0,5	8,4	1,7	0,7
Янв.-сент./Jan- Sept. 2009	16,6	3,4	18,1	5,3	12,0	2,2	8,5	1,6	0,6
2009	15,9	3,2	17,7	6,6	12,6	2,5	8,2	1,8	0,7
Янв.-март /Jan- March 2010	16,0	3,4	12,2	6,2	12,6	1,4	8,2	1,7	1,0
Янв.-июнь/Jan- June 2010	15,9	3,3	16,5	5,6	6,3	0,5	8,3	1,7	1,0
Янв.-сент./Jan- Sept. 2010	16,4	3,3	17,8	5,6	12,1	2,3	8,3	1,6	0,7
2010	15,9	3,2	17,7	6,6	12,5	2,5	8,1	1,8	1,0
Янв.-март/Jan- March 2011 ¹	16,1	3,5	12,3	6,2	11,7	1,0	8,3	1,6	1,0
Янв.-июнь/Jan- June 2011 ¹	15,9	3,3	16,5	5,9	4,4	0,5	8,1	1,7	1,0
Янв.-сент./Jan- Sept. 2011 ¹	16,3	3,3	17,7	5,7	12,0	2,3	8,3	1,5	1,0

¹ Данные предварительные/Preliminary data

² В пересчете на первичный продукт./Expressed in primary product.

Таблица 8.3. Экономическая доступность продуктов питания
(в среднем на душу населения, сомов в месяц)

Table 8.3. Economical availability of foodstuffs
(average per capita, soms per month)

Период/Period	Размер среднемесячных затрат домохозяйств на питание/Monthly average expenditures of households for food	Размер среднемесячных совокупных затрат домохозяйств/Monthly average aggregated expenditures of households	Фактическое значение индикатора (гр. 2/гр.3)*100/Actual meaning of the indicator (paragraph 2/ paragraph 3)*100
1	2	3	4
Янв.-март /Jan-March 2007	567	1178	48
Янв.-июнь/Jan-June 2007	597	1280	47
Янв.-сент./Jan-Sept. 2007	675	1466	46
2007	720	1579	46
Янв.-март/Jan-March 2008	887	1600	55
Янв.-июнь/Jan-June 2008	984	1890	52
Янв.-сент./Jan-Sept 2008	1052	2090	50
2008	1093	2257	48
Янв.-март/Jan-March 2009	1089	2143	51
Янв.-июнь/Jan-June 2009	1076	2177	49
Янв.-сент./Jan-Sept. 2009	1089	2136	51
2009	1095	2264	48
Янв.-март /Jan-March 2010	1018	2198	46
Янв.-июнь/Jan-June 2010	1039	2241	46
Янв.-сент./Jan-Sept. 2010	1080	2366	46
2010	1106	2449	45
Янв.-март/Jan-March 2011	1233	2493	49

**Таблица 8.4. Дифференциация расходов на питание
по социальным группам**

(в среднем на душу населения, сомов в месяце)

Table 8.4. Differentiation of expenditures for food by social groups

(average per capita, soms per month)

Период/Period	Первая квинтильная группа (с наименьшими доходами)/The first quintile group (with the lowest incomes)	Пятая квинтильная группа (с наибольшими доходами)/The fifth quintile group (with the
Янв.-март /Jan-March 2007	215	1129
Янв.-июнь/Jan-June 2007	243	1143
Янв.-сент./Jan-Sept. 2007	284	1275
2007	305	1317
Янв.-март/Jan-March 2008	309	1665
Янв.-июнь/Jan-June 2008	399	1792
Янв.-сент./Jan-Sept 2008	472	1836
2008	718	1565
Янв.-март/Jan-March 2009	708	1629
Янв.-июнь/Jan-June 2009	663	1623
Янв.-сент./Jan-Sept. 2009	670	1635
2009	648	1669
Янв.-март /Jan-March 2010	614	1574
Янв.-июнь/Jan-June 2010	583	1615
Янв.-сент./Jan-Sept. 2010	608	1692
2010	671	1680
Янв.-март/Jan-March 2011	790	1742

Таблица 8.5. Емкость внутреннего рынка отдельных продуктов ²

(тыс. тонн)

Table 8.5. Capacity of internal market of selected products²

(thsd. tons)

	Хлеб и хлебо- продукты/ Bread and bread products	Мясо и мясопро- дукты/ Meat and meat products	Молоко и молочные продукты/Milk and dairy products	Яйца (млн. штук)/ Eggs (mln. pieces)	Овощи и бахчевые/ Vegetables and melons	Фрукты и ягоды/ Fruits and berries	Картофель /Potatoes	Сахар/ Sugar	Масло раститель- ное/ Vegetable oil
Янв.-март /Jan- March 2007	237,3	46,3	168,8	78,5	188,4	32,3	128,2	20,0	7,5
Янв.-июнь/Jan- June 2007	483,1	92,6	487,1	158,7	194,8	43,4	250,1	48,4	13,1
Янв.-сент./Jan- Sept. 2007	761,2	150,1	818,9	242,3	512,1	124,3	394,3	75,4	24,9
2007	963,2	182,3	1094,1	371,7	766,8	188,5	502,5	111,1	31,4
Янв.-март/Jan- March 2008	241,6	48,1	171,9	81,7	193,1	32,9	129,5	22,8	7,7
Янв.-июнь/Jan- June 2008	487,1	93,6	494,9	163,9	196,1	37,5	252,0	50,8	16,1
Янв.-сент./Jan-Sept 2008	770,1	155,0	825,9	248,3	524,0	96,7	396,8	76,4	28,5
2008	968,3	191,8	1103,2	382,4	768,7	152,0	506,7	112,3	35,0
Янв.-март/Jan- March 2009	245,9	49,3	186,7	90,2	194,3	14,1	127,2	25,3	14,3
Янв.-июнь/Jan- June 2009	491,0	95,1	505,7	168,9	201,4	14,1	258,5	51,3	20,7
Янв.-сент./Jan- Sept. 2009	765,4	156,1	832,7	244,3	552,2	99,6	391,8	72,7	28,8
2009	976,9	198,9	1089,5	405,1	774,3	154,4	504,6	109,1	40,4
Янв.-март /Jan- March 2010	248,3	52,8	190,0	96,5	195,9	22,0	127,2	26,3	15,0
Янв.-июнь/Jan- June 2010	494,1	101,2	511,6	173,7	196,2	14,4	258,4	51,5	30,0
Янв.-сент./Jan- Sept. 2010	766,6	153,1	829,8	262,3	563,9	105,8	387,7	74,7	32,8
2010	991,7	201,0	1103,1	412,3	778,9	155,8	504,8	110,6	62,4
Янв.-март/Jan- March 2011 ¹	252,1	54,8	193,6	97,6	184,2	16,4	130,5	25,5	15,1
Янв.-июнь/Jan- June 2011 ¹	499,4	102,5	518,0	185,7	138,3	14,7	253,9	53,1	31,4
Янв.-сент./Jan- Sept. 2011 ¹	771,4	158,0	837,8	268,7	565,2	106,4	390,8	70,0	45,3

¹ Данные предварительные/Preliminary data

² В пересчете на первичный продукт./Expressed in primary product.

Таблица 8.6. Баланс фактического уровней производства продовольствия в Кыргызской Республике
(тыс.тонн)

Table 8.6. Balance of actual level of food production in the Kyrgyz Republic
(thsd. tons)

	Производство основных видов продовольствия/Production of main types of food								
	Пшеница в весе после доработки/ Wheat in net weight	Мясо в убойном весе/Meat in slaughter weight	Молоко сырое/Raw milk	Яйца (млн. штук)/Eggs (mln. pieces)	Овощи и бахчевые/ Vegetables and melons	Фрукты и ягоды/ Fruits and berries	Картофель /Potatoes	Сахар/ Sugar	Масло растительное/ Vegetable oil
Янв.-март /Jan-March 2007	-	42,2	204,5	70,1	-	-	-	-	4,5
Янв.-июнь/Jan-June 2007	24,5	84,9	570,8	190,5	32,7	1,8	21,9	9,5	7,4
Янв.-сент./Jan-Sept. 2007	678,6	132,3	973,6	293,7	711,6	122,5	974,3	16,0	11,2
2007	708,9	183,1	1240,0	373,7	908,9	180,5	1373,8	36,8	17,6
Янв.-март/Jan-March 2008	-	42,8	210,0	72,7	-	-	-	6,6	4,2
Янв.-июнь/Jan-June 2008	37,9	85,6	586,2	193,1	39,4	6,8	22,1	10,7	7,6
Янв.-сент./Jan-Sept 2008	720,0	133,3	998,7	292,4	742,5	140,8	976,7	10,8	11,0
2008	746,2	184,2	1273,5	369,3	947,0	185,4	1334,9	10,9	18,3
Янв.-март/Jan-March 2009	-	43,3	216,7	67,9	-	-	-	0,0	4,9
Янв.-июнь/Jan-June 2009	29,0	86,8	607,1	186,1	41,9	4,8	25,4	0,1	7,8
Янв.-сент./Jan-Sept. 2009	943,3	135,1	1032,6	291,1	791,4	155,8	899,3	0,2	12,1
2009	1056,7	185,5	1314,7	369,3	969,7	200,5	1393,1	5,9	20,6
Янв.-март /Jan-March 2010	-	44,1	224,2	71,5	-	-	-	0,0	5,6
Янв.-июнь/Jan-June 2010	9,5	88,1	628,4	191,4	28,0	3,7	19,0	0,0	9,5
Янв.-сент./Jan-Sept. 2010	756,3	138,7	1070,6	294,4	803,4	146,0	781,3	0,1	12,8
2010	813,3	187,8	1359,9	373,1	969,3	193,1	1339,4	14,0	18,1
Янв.-март/Jan-March 2011 ¹	-	44,4	223,8	73,8	Я	-	-	0,0	4,7
Янв.-июнь/Jan-June 2011 ¹	11,1	89,0	627,5	201,8	31,9	4,1	22,4	0,0	8,1
Янв.-сент./Jan-Sept. 2011 ¹	778,6	136,5	1068,0	312,0	787,4	161,0	798,7	0,0	11,1

¹ Данные предварительные/Preliminary data

Order No. Copies: 35
Information and Publishing Department
of the Main Computing Center of the Natstatcom
of the Kyrgyz Republic

«_____» November 2011